

LOC/DME I-EMB <b>109.75</b> Chan <b>34(Y)</b>	APP CRS <b>175°</b>	Rwy Ldg TDZE Apt Elev <b>7202</b> <b>1771</b> <b>1791</b>
---	------------------------	--

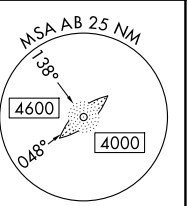
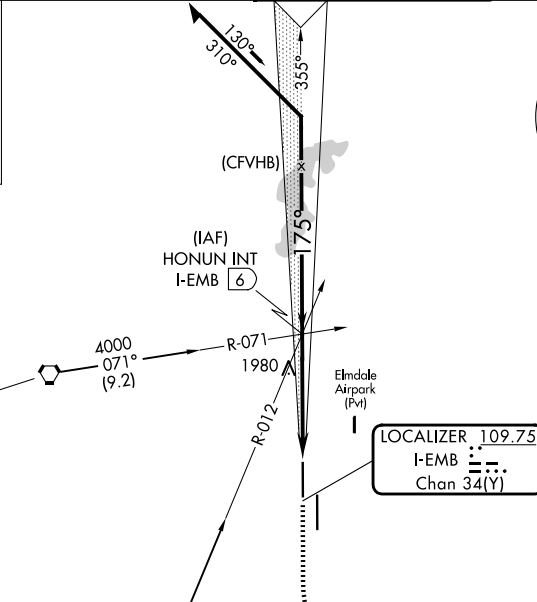
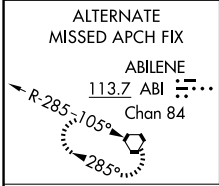
# LOC RWY 17R

ABILENE RGNL (ABI)

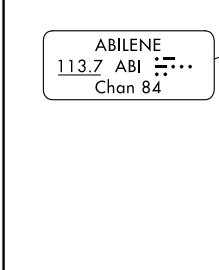
ADF required for missed approach.

MISSED APPROACH: Climb to 2800 then climbing left turn to 4000 direct TOMHI LOM and hold.

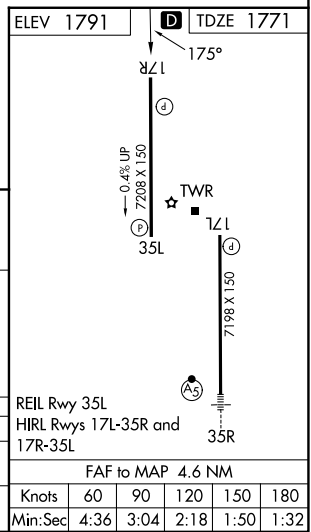
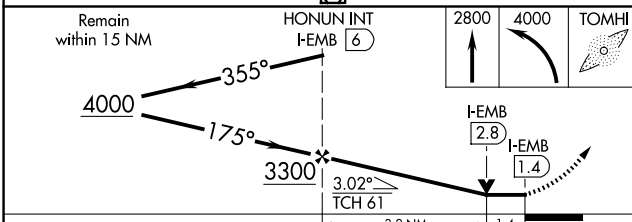
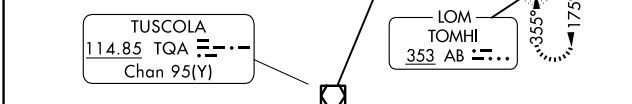
ATIS <b>118.25</b>	ABILENE APP CON <b>125.0 338.3 (E)</b> <b>127.2 282.3 (W)</b>	ABILENE TOWER <b>120.1 257.8</b>	GND CON <b>121.7 348.6</b>
-----------------------	---	-------------------------------------	-------------------------------



Procedure NA for arrival on ABI VORTAC airway radials 037 CW 099.



Procedure NA for arrival on TQA VOR/DME airway radial 082.



CATEGORY	A	B	C	D	E
S-LOC 17R	2280-1	509 (500-1)	2280-1 <sup>3</sup> / <sub>8</sub> 509 (500-1 <sup>3</sup> / <sub>8</sub> )		
CIRCLING	2300-1 509 (600-1)	2320-1 529 (600-1)	2420-1 <sup>3</sup> / <sub>4</sub> 629 (700-1 <sup>3</sup> / <sub>4</sub> )	2460-2 669 (700-2)	2620-3 829 (900-3)

SC-2, 14 MAY 2026 to 11 JUN 2026

SC-2, 14 MAY 2026 to 11 JUN 2026