

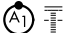
ABILENE, TEXAS

HI-ILS or LOC X RWY 16

LOC I-TYY 109.9	APCH CRS 164°	Rwy Idg 13,499 TDZE 1790 Arprt Elev 1799	[USAF]	DYESS AFB (KDYS)
---------------------------	-------------------------	---	--------	------------------

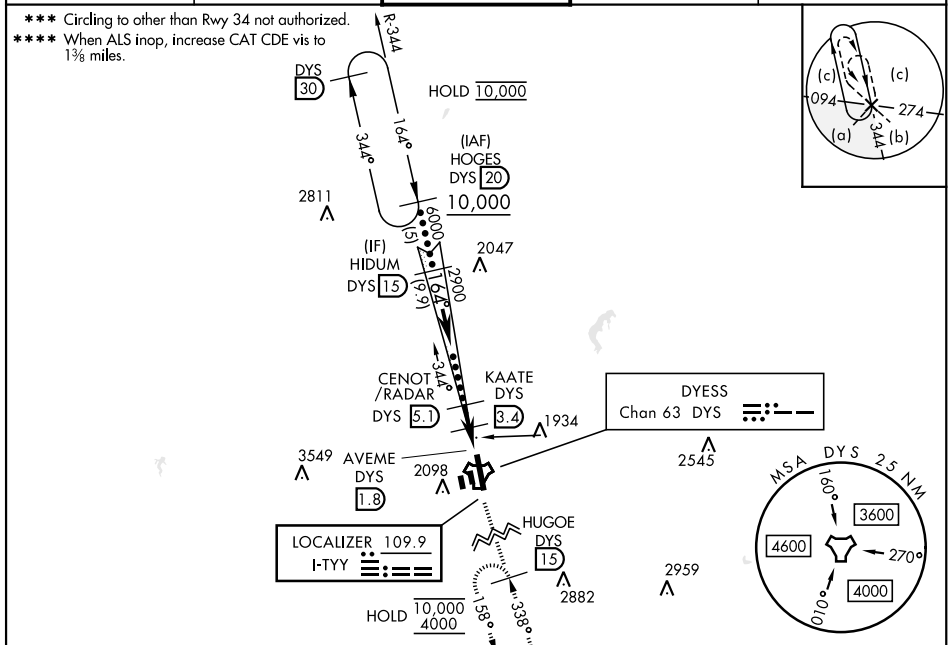
RADAR or DME required.

* When ALS inop, increase CAT CDE RVR to 40 and vis to ¼ mile.
 ** When ALS inop, increase CAT CDE RVR to 60, vis to 1½ miles.

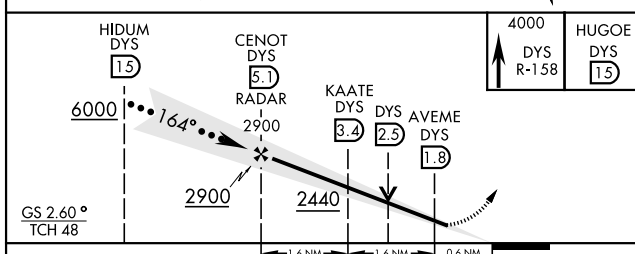
ALSF-1 

MISSED APPROACH: Climb to 4000 via DYS TACAN R-158 to HUGOE and hold.

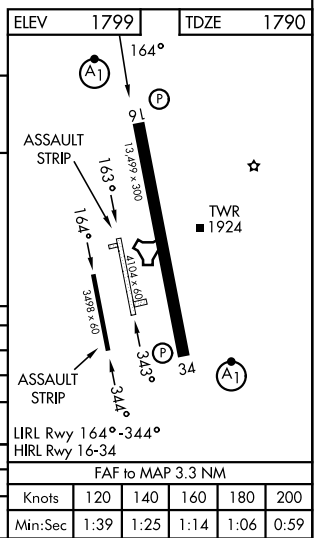
ATIS * 269.175	ABILENE APP CON 125.0 338.3 EAST 127.2 282.3 WEST	TOWER 133.0 257.675	GND CON 118.35 275.8	ASR
--------------------------	---	-------------------------------	--------------------------------	-----



EMERG SAFE ALT 100 NM 4600	ELEV 1799	TDZE 1790
----------------------------	-----------	-----------



CATEGORY	C	D	E
S-ILS 16 *	1990/24	200	(200-½)
S-LOC 16 **	2200/40	410	(500-¾)
CIRCLING ***	2440-1¾ 650 (700-1¾)	2480-2¼ 690 (700-2¼)	2540-2¾ 750 (800-2¾)
WITHOUT LAST STEPDOWN FIX			
S-LOC 16 ****	2260/50	470	(500-1)
CIRCLING ***	2440-1¾ 650 (700-1¾)	2480-2¼ 690 (700-2¼)	2540-2¾ 750 (800-2¾)



ABILENE, TEXAS
 Amdt 4 02OCT25

32° 25' N-99° 51' W

DYESS AFB (KDYS)

HI-ILS or LOC X RWY 16

SC-2, 14 MAY 2026 to 11 JUN 2026

SC-2, 14 MAY 2026 to 11 JUN 2026