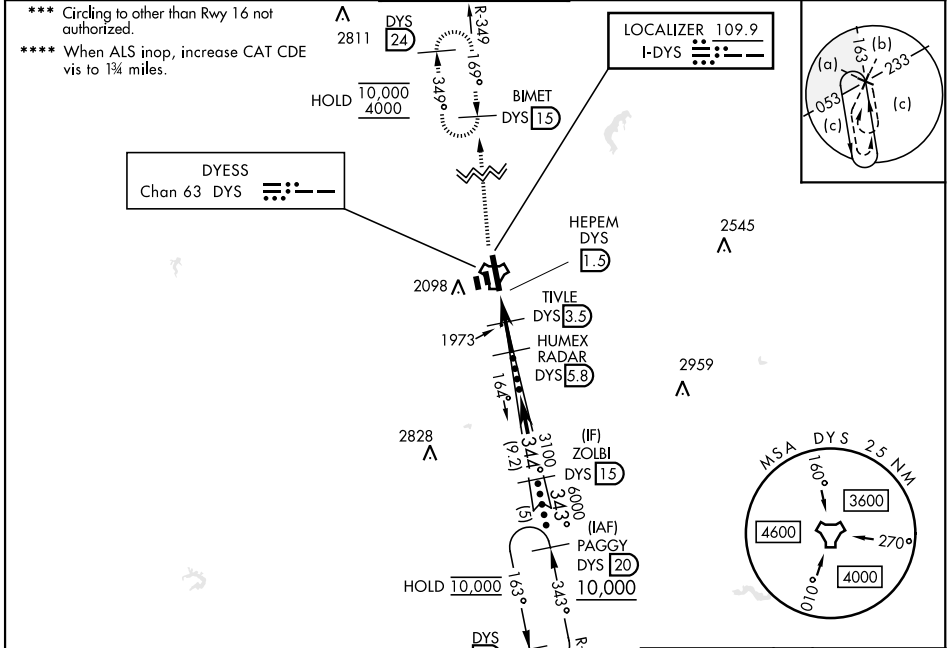


HI-ILS or LOC X RWY 34

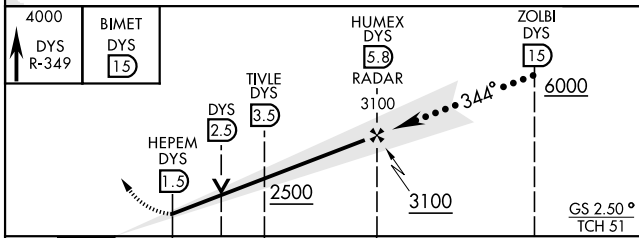
LOC I-DYS 109.9	APCH CRS 344°	Rwy Idg 13,499 TDZE 1788 Arprt Elev 1799	[USAF]	DYESS AFB (KDYS)
---------------------------	-------------------------	---	--------	------------------

RADAR or DME required.	ALS-F1 	MISSED APPROACH: Climb to 4000 via DYS TACAN R-349 to BIMET and hold.
------------------------	------------	--

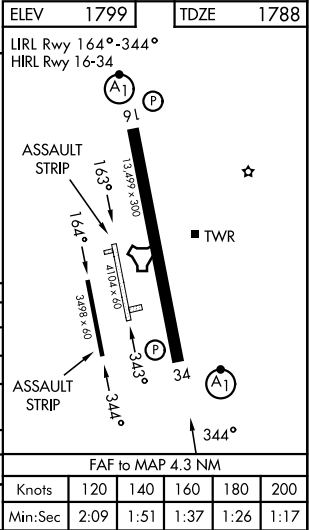
ATIS ★ 269.175	ABILENE APP CON 125.0 338.3 EAST 127.2 282.3 WEST	TOWER 133.0 257.675	GND CON 118.35 275.8	ASR
--------------------------	---	-------------------------------	--------------------------------	-----



EMERG SAFE ALT 100 NM 4600



CATEGORY	C	D	E
S-ILS 34*	1988/24	200	(200-1/2)
S-LOC 34**	2240/45	452	(500-7/8)
CIRCLING***	2440-1 3/4 650 (700-1 3/4)	2480-2 1/4 690 (700-2 1/4)	2540-2 3/4 750 (800-2 3/4)
WITHOUT LAST STEPDOWN FIX			
S-LOC 34****	2420-1 3/8	632	(700-1 3/8)
CIRCLING***	2440-1 3/4 650 (700-1 3/4)	2480-2 1/4 690 (700-2 1/4)	2540-2 3/4 750 (800-2 3/4)



HI-ILS or LOC X RWY 34

SC-2, 14 MAY 2026 to 11 JUN 2026

SC-2, 14 MAY 2026 to 11 JUN 2026