

# HI-TACAN X RWY 34

TACAN DYS Chan <b>63</b>	APCH CRS <b>338°</b>	Rwy Idg <b>13,499</b> TDZE <b>1788</b> Arprt Elev <b>1799</b>
-----------------------------	-------------------------	---

[USAF]

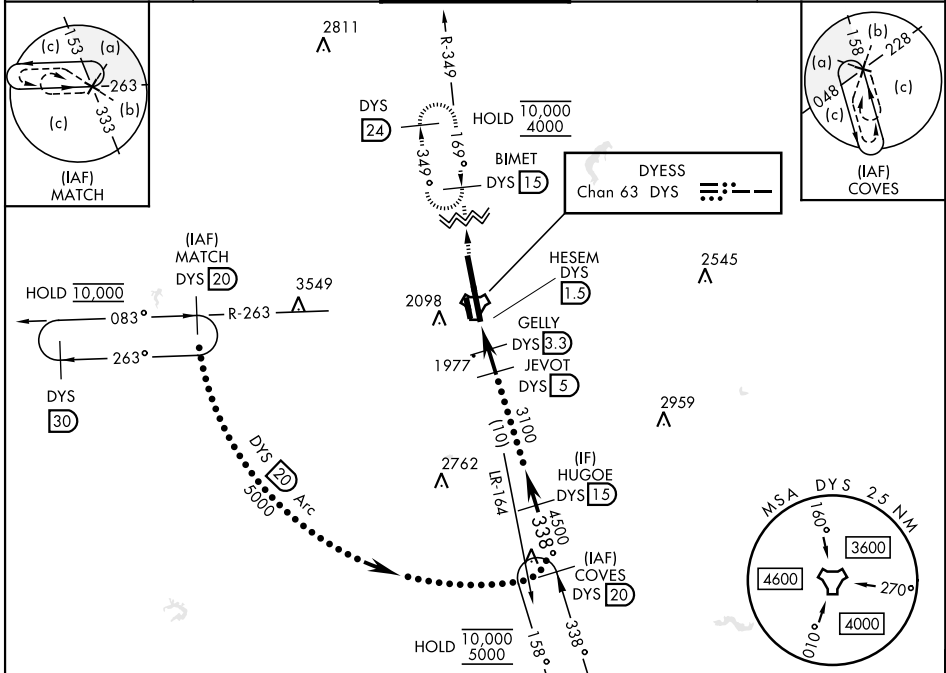
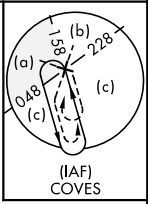
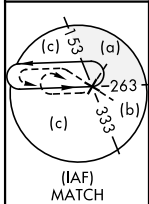
DYESS AFB (KDYS)

\* When ALS inop, increase CAT CDE vis to 1 3/4 miles.  
 \*\* Circling to other than Rwy 16 not authorized.

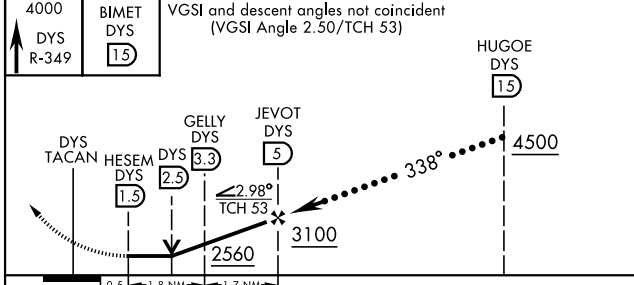


MISSED APPROACH: Climb to 4000 via DYESS TACAN R-349 to BIMET and hold.

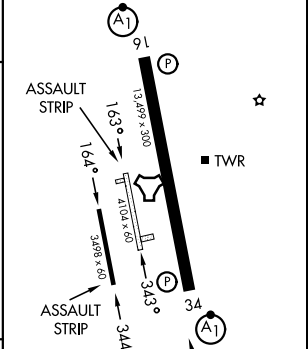
ATIS ★ <b>269.175</b>	ABILENE APP CON <b>125.0 338.3</b> EAST <b>127.2 282.3</b> WEST	DYESS TOWER <b>133.0 257.675</b>	GND CON <b>118.35 275.8</b>	ASR
--------------------------	---	-------------------------------------	--------------------------------	-----



EMERG SAFE ALT 100 NM 4600



ELEV 1799	TDZE 1788
-----------	-----------



CATEGORY	C	D	E
S-34 *	2240/45	452	(500-7%)
CIRCLING **	2440-1 3/4 650 (700-1 3/4)	2480-2 1/4 690 (700-2 1/4)	2540-2 3/4 750 (800-2 3/4)

LIRL Rwy 164° - 344°	FAF to MAP 3.5 NM					
HIRL Rwy 16-34	Knots	120	140	160	180	200
	Min:Sec	1:45	1:30	1:19	1:10	1:03

# HI-TACAN X RWY 34

SC-2, 14 MAY 2026 to 11 JUN 2026

SC-2, 14 MAY 2026 to 11 JUN 2026