

ABILENE, TEXAS

# TACAN W RWY 16

TACAN DYS Chan <b>63</b>	APCH CRS <b>169°</b>	Rwy Idg <b>13,499</b> TDZE <b>1790</b> Arprt Elev <b>1799</b>
-----------------------------	-------------------------	---

[USAF]

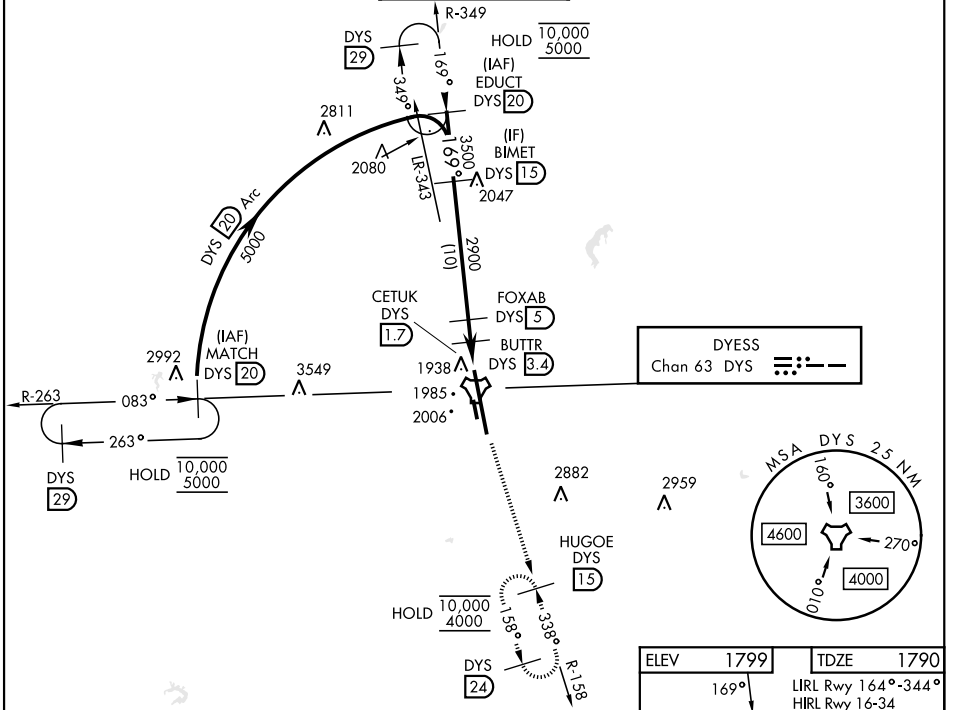
DYESS AFB (KDYS)

\* When ALS inop, increase CAT AB RVR to 55 and vis to 1 mile, CAT CDE RVR to 60, vis to 1½ miles.  
 \*\* Circling to other than RWY 34 not authorized.



MISSED APPROACH: Climb to 4000 via DYS TACAN R-158 to HUGOE and hold.

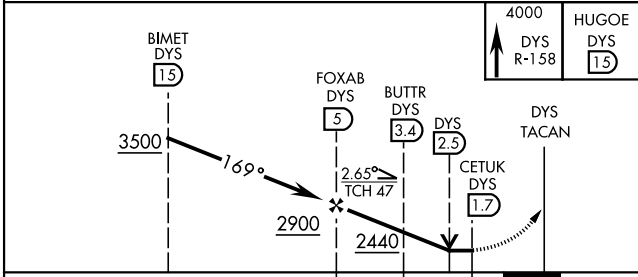
ATIS ★ <b>269.175</b>	ABILENE APP CON <b>125.0 338.3</b> EAST <b>127.2 282.3</b> WEST	DYESS TOWER <b>133.0 257.675</b>	GND CON <b>118.35 275.8</b>	ASR
--------------------------	---	-------------------------------------	--------------------------------	-----



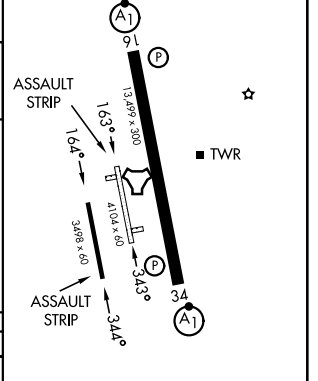
SC-2, 14 MAY 2026 to 11 JUN 2026

SC-2, 14 MAY 2026 to 11 JUN 2026

EMERG SAFE ALT 100 NM 4600



ELEV 1799	TDZE 1790
-----------	-----------



CATEGORY	A	B	C	D	E
S-16 *	2200/24	410 (500-½)	2200/40	410 (500-¾)	
CIRCLING **	2300-1 510 (600-1)	2320-1 530 (600-1)	2440-1¼ 650 (700-1¾)	2480-2¼ 690 (700-2¼)	2540-2¾ 750 (800-2¾)

FAF to MAP 3.3 NM					
Knots	60	90	120	150	180
Min:Sec	3:18	2:12	1:39	1:19	1:06

ABILENE, TEXAS

32°25'N-99°51'W

DYESS AFB (KDYS)

Amdt 4 02OCT25

# TACAN W RWY 16