

ABILENE, TEXAS

VOR/DME RWY 34

VOR/DME TQA 114.85 Chan 95(Y)	APCH CRS 340°	Rwy Idg 13,499 TDZE 1788 Arprt Elev 1799
---	-------------------------	---

[USAF]

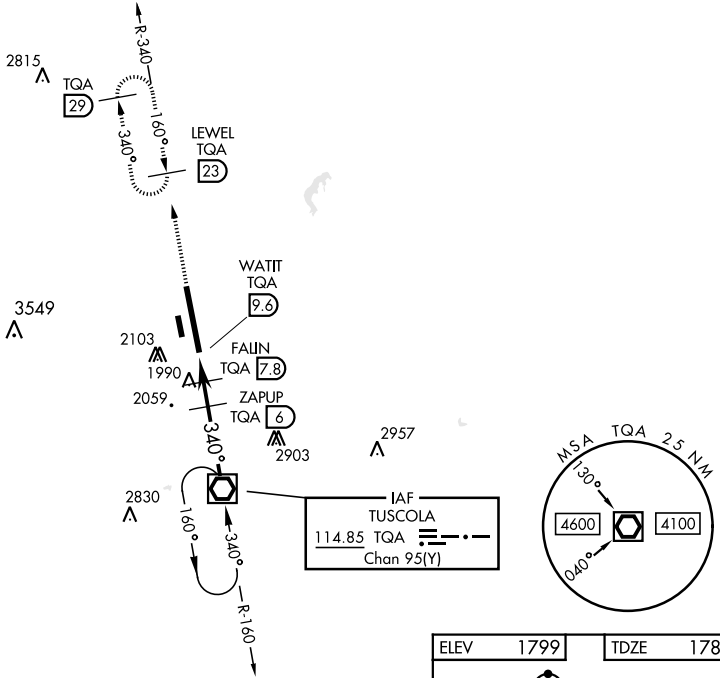
DYESS AFB (KDYS)

* When ALS inop, increase CAT AB RVR to 55 and vis to 1 mile, CAT CDE RVR vis to 1 3/8 miles.
 ** Circling to other than Rwy 16 NA



MISSED APPROACH: Climb to 4000 via TQA VOR/DME R-340 to LEWEL and hold.

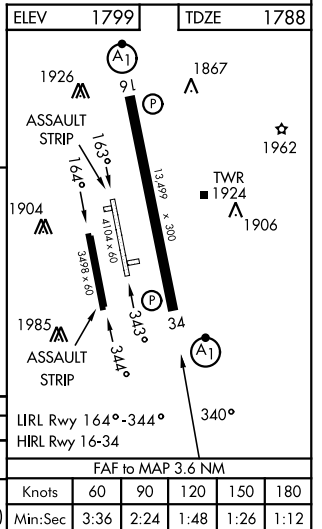
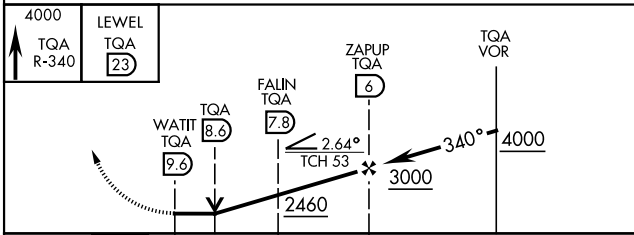
ATIS * 269.175	ABILENE APP CON 125.0 338.3 EAST 127.2 282.3 WEST	TOWER 133.0 257.675	GND CON 118.35 275.8	ASR
--------------------------	---	-------------------------------	--------------------------------	-----



SC-2, 14 MAY 2026 to 11 JUN 2026

SC-2, 14 MAY 2026 to 11 JUN 2026

EMERG SAFE ALT 100 NM 4600



CATEGORY	A	B	C	D	E	
S-34 *	2260/24	472 (500-1/2)	2260/50	472 (500-1)		
CIRCLING **	2300-1 510 (600-1)	2320-1 530 (600-1)	2460-1 3/4 670 (700-1 3/4)	2460-2 670 (700-2)	2460-2 1/4 670 (700-2 1/4)	
	LIRL Rwy 164°-344°					
	HIRL Rwy 16-34					
	FAF to MAP 3.6 NM					
	Knots	60	90	120	150	180
	Min:Sec	3:36	2:24	1:48	1:26	1:12

ABILENE, TEXAS

32°25' -99°51'W

DYESS AFB (KDYS)

Amdt 3 10NOV16

VOR/DME RWY 34