

CLOUD-FOUR BRAVO (RNAV) DEPARTURE (CLOUB4.CLOUD)

ALAMOGORDO, NEW MEXICO

ATIS ★ 273.5
TOWER ★
119.3 254.4
DEP CON
128.1 284.0
ALBUQUERQUE CENTER
132.65 257.6

RNAV1 - GPS

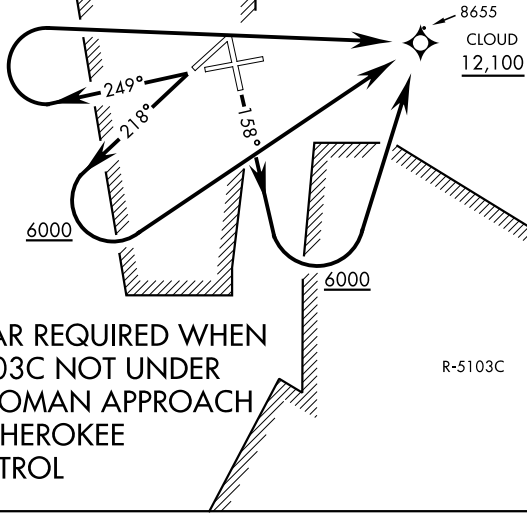
[USAF]

Rwy	Knots	60	120	180	240	300	360
16	V/V(fpm)	490	980	1470	1960	2450	2940
22/25	V/V(fpm)	500	1000	1500	2000	2500	3000

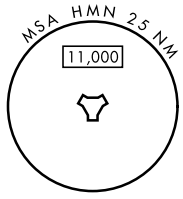
Minimum climb to 12,100

BEAK B MOA

BEAK C MOA



**RADAR REQUIRED WHEN
R-5103C NOT UNDER
HOLLOMAN APPROACH
OR CHEROKEE
CONTROL**



DEPARTURE ROUTE DESCRIPTION

TAKEOFF RWY 16: Climb on track 158°. When leaving 6000 turn left direct CLOUD then via assigned routing. Cross CLOUD at or above 12,100.

TAKEOFF RWY 22: Climb on track 218°. When leaving 6000 turn left direct CLOUD then via assigned routing. Cross CLOUD at or above 12,100.

TAKEOFF RWY 25: Climb on track 249°. When leaving 6000 turn right direct CLOUD then via assigned routing. Cross CLOUD at or above 12,100.

SW-1, 14 MAY 2026 to 11 JUN 2026

SW-1, 14 MAY 2026 to 11 JUN 2026