

# DIEZL ONE DEPARTURE

AL-7 [USAF]

HOLLOMAN AFB (KHMN)  
ALAMOGORDO, NEW MEXICO

ATIS ★ 273.5  
 CLNC DEL  
 126.7 289.4  
 GND CON  
 127.05 275.8  
 TOWER ★  
 119.3 254.4  
 DEP CON  
 128.1 284.0  
 ALBUQUERQUE CENTER  
 132.65 257.6

RADAR required

Rwy	Knots	60	120	180	240	300	360
04 (A)	V/V(fpm)	350	700	1050	1400	1750	2100
16 (B)	V/V(fpm)	492	984	1476	1968	2460	2952
34 (C)	V/V(fpm)	350	700	1050	1400	1750	2100

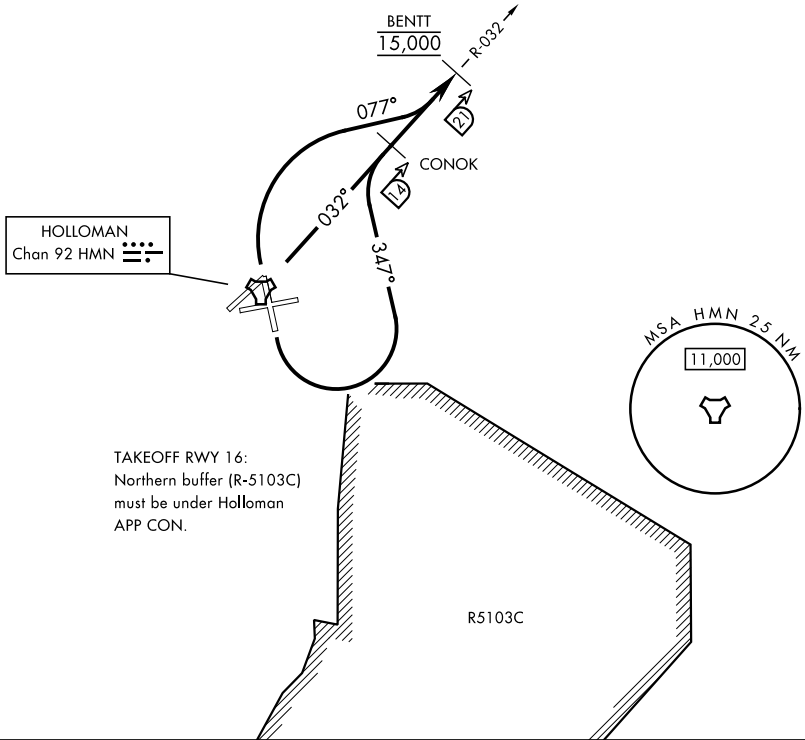
Minimum Climb Rate

11,929

(A) to 9300

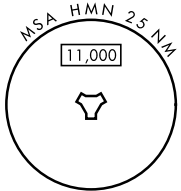
(B) to 11,700

## MILITARY USE ONLY



HOLLOMAN  
 Chan 92 HMN

TAKEOFF RWY 16:  
 Northern buffer (R-5103C)  
 must be under Holloman  
 APP CON.



### DEPARTURE ROUTE DESCRIPTION

TAKEOFF RWY 4: Climb direct BENTT, cross BENTT at 15,000.

TAKEOFF RWY 16: Climbing left turn to track 347°, intercept HMN R-032 direct CONOK, depart CONOK direct BENTT. Cross BENTT at 15,000.

TAKEOFF RWY 34: Climbing right turn on track 077°, intercept HMN R-032 direct BENTT, cross BENTT at 15,000.

# DIEZL ONE DEPARTURE

Amdt 1 10AUG23

ALAMOGORDO, NEW MEXICO  
HOLLOMAN AFB (KHMN)

SW-1, 14 MAY 2026 to 11 JUN 2026

SW-1, 14 MAY 2026 to 11 JUN 2026