

HI-ILS or LOC Z RWY 16

LOC I-MUK 108.9	APCH CRS 158°	Rwy ldg TDZE Arprt Elev 12,134 4083 4093
---------------------------	-------------------------	--

[USAF]

HOLLOMAN AFB (KHMN)

RADAR or DME required.	ALSF-1 	MISSED APPROACH: Climb straight ahead to 7000, passing 5000 turn right and intercept HMN R-320 outbound to JOBAM and hold.
------------------------	------------	--

ATIS ★ 273.5	ALBUQUERQUE CENTER 132.65 257.6	APP CON 120.6 269.225	TOWER ★ 119.3 254.4	GND CON 127.05 275.8
------------------------	---	---------------------------------	-------------------------------	--------------------------------

When circling to Rwy 25 at Night, operational VGSIL required, remain on or above VGSIL glidepath until threshold.

CAUTION: When Rwy 22 VGSIL inop, circling to Rwy 22 NA at night. *6483

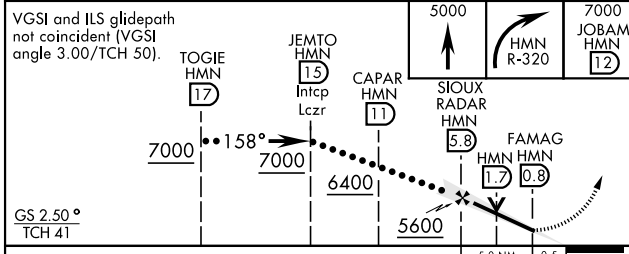
USAF ONLY: When Rwy 16 VGSIL inop, straight-in Rwy 16 authorized at night with aircrew command approval.

INBOUND WEST:
Airspace West Restricted.
Expect routing via CORONA.

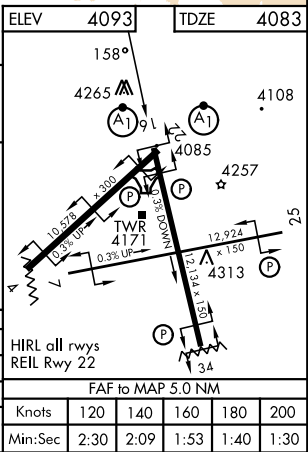
Unlit terrain 4082' MSL, 136' right of course.

CAUTION: ILS TCH 41'. Height group 4 (B-747/767/777, L-1011, DC-10, A-300, B-1, KC-10, E-4, C-5, and VC-25) wheel crossing height 16'.

EMERG SAFE ALT 100 NM 14,200



CATEGORY	C	D	E
S-ILS 16 *	4283-½	200 (200-½)	
S-LOC 16**	4600-1	517 (600-1)	
CIRCLING	5200-3	1107 (1200-3)	5300-3 1207 (1300-3)



HI-ILS or LOC Z RWY 16

SW-1, 14 MAY 2026 to 11 JUN 2026

SW-1, 14 MAY 2026 to 11 JUN 2026