

HI-TACAN RWY 16

TACAN HMN Chan 92	APCH CRS 162°	Rwy ldg 12,134 TDZE 4083 Arprt Elev 4093
----------------------	------------------	--

[USAF]

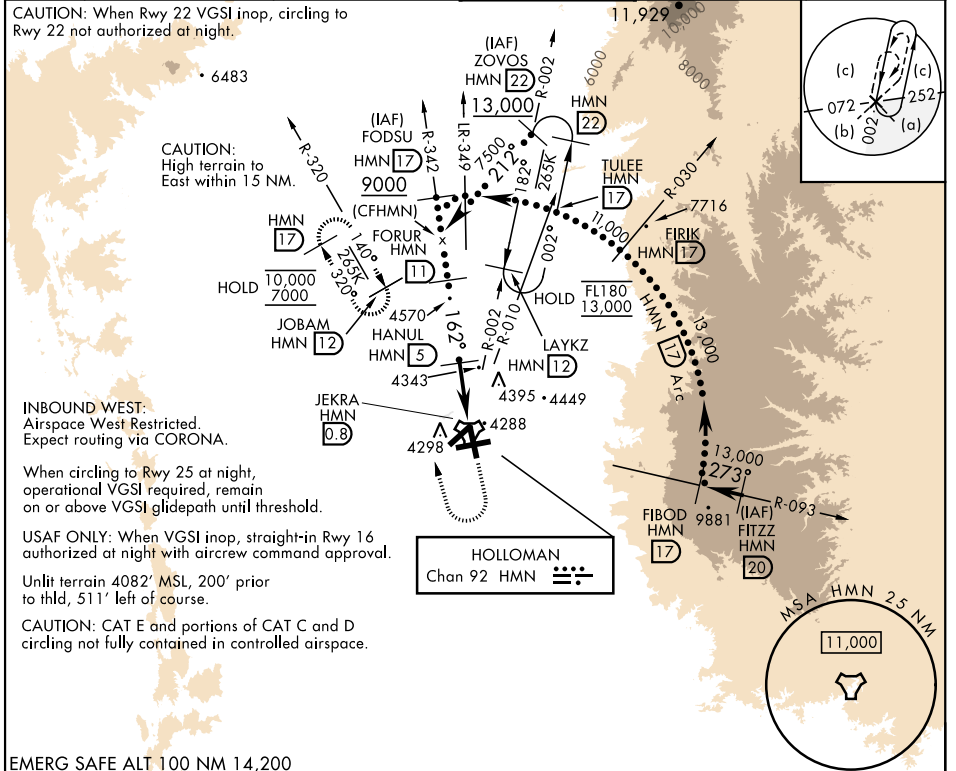
HOLLOMAN AFB (KHMN)

⚠ * When ALS inop, increase CAT CDE vis to 1½ miles.
When VGSi inop, procedure not authorized at night.

ALSf-1 

MISSED APPROACH: Climb straight ahead to 7000, passing 5000 turn right and intercept HMN R-320 outbound to JOBAM and hold.

ATIS ★ 273.5	ALBUQUERQUE CENTER 132.65 257.6	APP CON 120.6 269.225	TOWER ★ 119.3 254.4	GND CON 127.05 275.8	CLNC DEL 126.7 289.4
-----------------	------------------------------------	--------------------------	------------------------	-------------------------	-------------------------



EMERG SAFE ALT 100 NM 14,200

	ELEV 4093		TDZE 4083													
	FORUR HMN 11		JOBAM													
	HMN R-320		JOBAM													
<table border="1"> <tr> <th>CATEGORY</th> <th>C</th> <th>D</th> <th>E</th> </tr> <tr> <td>S-16 *</td> <td>4620-1</td> <td>537 (600-1)</td> <td></td> </tr> <tr> <td> CIRCLING</td> <td>5200-3 1107 (1200-3)</td> <td>5300-3 1207 (1300-3)</td> <td></td> </tr> </table>	CATEGORY	C	D	E	S-16 *	4620-1	537 (600-1)		CIRCLING	5200-3 1107 (1200-3)	5300-3 1207 (1300-3)					
CATEGORY	C	D	E													
S-16 *	4620-1	537 (600-1)														
CIRCLING	5200-3 1107 (1200-3)	5300-3 1207 (1300-3)														

HI-TACAN RWY 16

SW-1, 14 MAY 2026 to 11 JUN 2026

SW-1, 14 MAY 2026 to 11 JUN 2026