

HI-TACAN RWY 22

TACAN HMN Chan 92	APCH CRS 214°	Rwy ldg 10,578 TDZE 4083 Arprt Elev 4093
--------------------------	----------------------	---

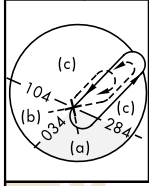
[USAF]

HOLLOMAN AFB (KHMN)

▼ *When ALS inop, increase CAT CDE vis to 1½ miles.
When VGSi inop, procedure not authorized at night.

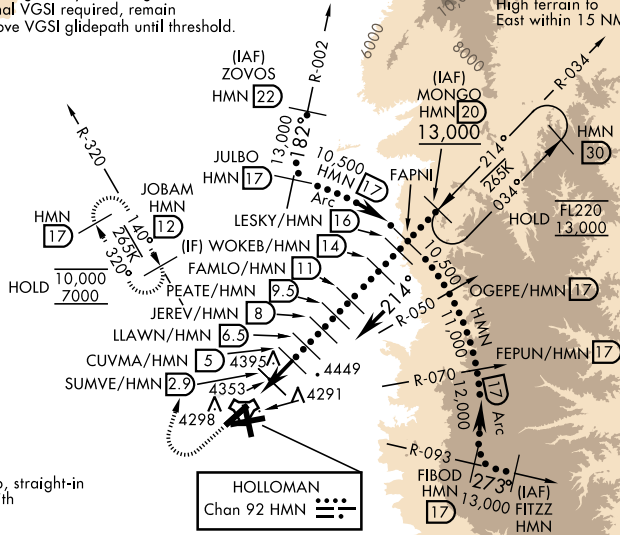
ALSF-1 MISSED APPROACH: Climb straight ahead to 7000, passing 5000 turn right and intercept HMN TACAN R-320 outbound to JOBAM and hold.

ATIS ★ 273.5	ALBUQUERQUE CENTER 132.65 257.6	APP CON 120.6 269.225	TOWER ★ 119.3 254.4	GND CON 127.05 275.8	CLNC DEL 126.7 289.4
---------------------	--	------------------------------	----------------------------	-----------------------------	-----------------------------



When circling to Rwy 25 at night, operational VGSi required, remain on or above VGSi glidepath until threshold.

CAUTION: High terrain to East within 15 NM.

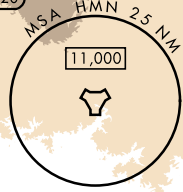


INBOUND WEST:
Airspace West Restricted.
Expect routing via CORONA.

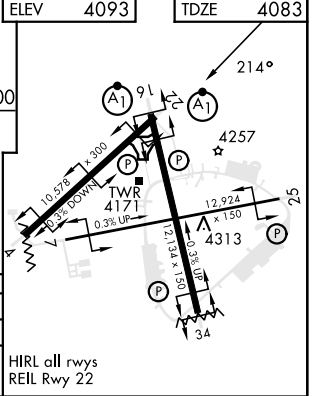
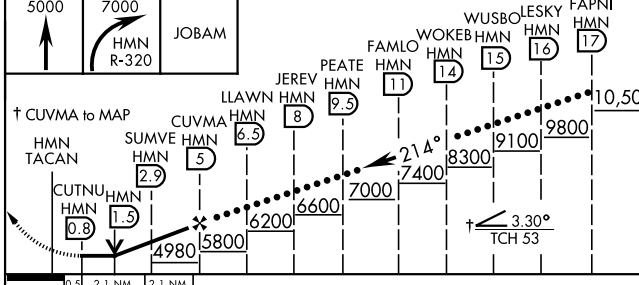
USAF ONLY: When VGSi inop, straight-in Rwy 22 authorized at night with aircrew command approval.

CAUTION: When Rwy 16 VGSi inop, circling to Rwy 16 NA at night. Unlit terrain 0' AGL/4083' MSL, 200' from thld, 682' and 1008' right of course.

HOLLOMAN
Chan 92 HMN



EMERG SAFE ALT 100 NM 14,200 VGSi and descent angle not coincident, VGSi angle 2.50°/TCH 53.



CATEGORY	C	D	E
S-22 *	4540-7/6	457 (500-7/6)	
CIRCLING	5200-3 1107 (1200-3)		5300-3 1207 (1300-3)

HIRL all rwys
REIL Rwy 22

HI-TACAN RWY 22

SW-1, 14 MAY 2026 to 11 JUN 2026

SW-1, 14 MAY 2026 to 11 JUN 2026