

HI-TACAN RWY 34

TACAN HMN Chan 92	APCH CRS 334°	Rwy ldg 12,134 TDZE 4058 Arpt Elev 4093
--------------------------	----------------------	--

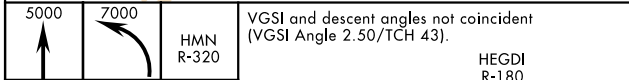
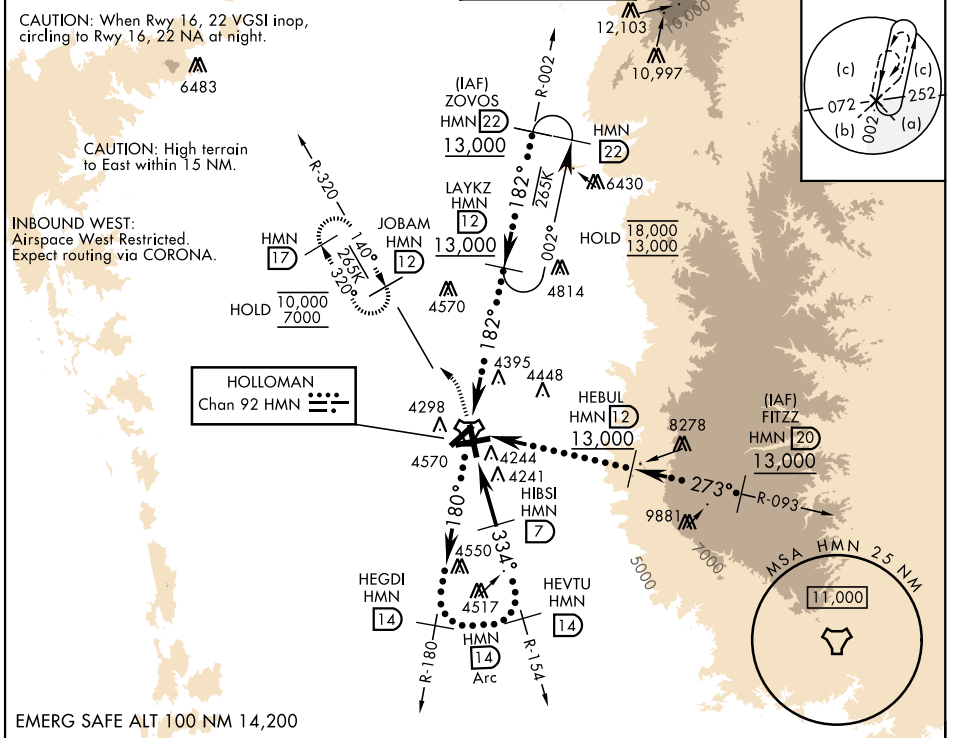
[USAF]

HOLLOMAN AFB (KHMN)

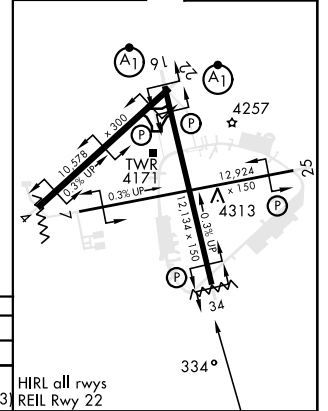
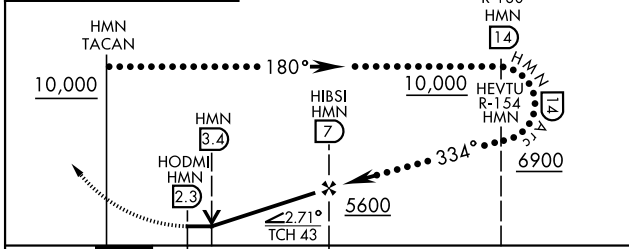
When circling to Rwy 25 at night, operational VGSI required, remain on or above VGSI glidepath until threshold.

MISSED APPROACH: Climb straight ahead to 7000, passing 5000 turn left to intercept HMN TACAN R-320 to JOBAM and hold.

ATIS ★ 273.5	ALBUQUERQUE CENTER 132.65 257.6	APP CON 120.6 269.225	TOWER ★ 119.3 254.4	GND CON 127.05 275.8	CLNC DEL 126.7 289.4
---------------------	--	------------------------------	----------------------------	-----------------------------	-----------------------------



ELEV	4093	TDZE	4058
------	------	------	------



CATEGORY	A	B	C	D	E
S-34	4520-1	462 (500-1)	4520-1 3/8	462 (500-1 3/8)	5300-3
CIRCLING	4620-1	527 (600-1)	5200-3 (1107 (1200-3))	5200-3 (1107 (1200-3))	5300-3 (1207 (1300-3))

HIRL all rwys
REIL Rwy 22

HI-TACAN RWY 34

SW-1, 14 MAY 2026 to 11 JUN 2026

SW-1, 14 MAY 2026 to 11 JUN 2026