

ALAMOGORDO, NEW MEXICO

ILS or LOC X RWY 16

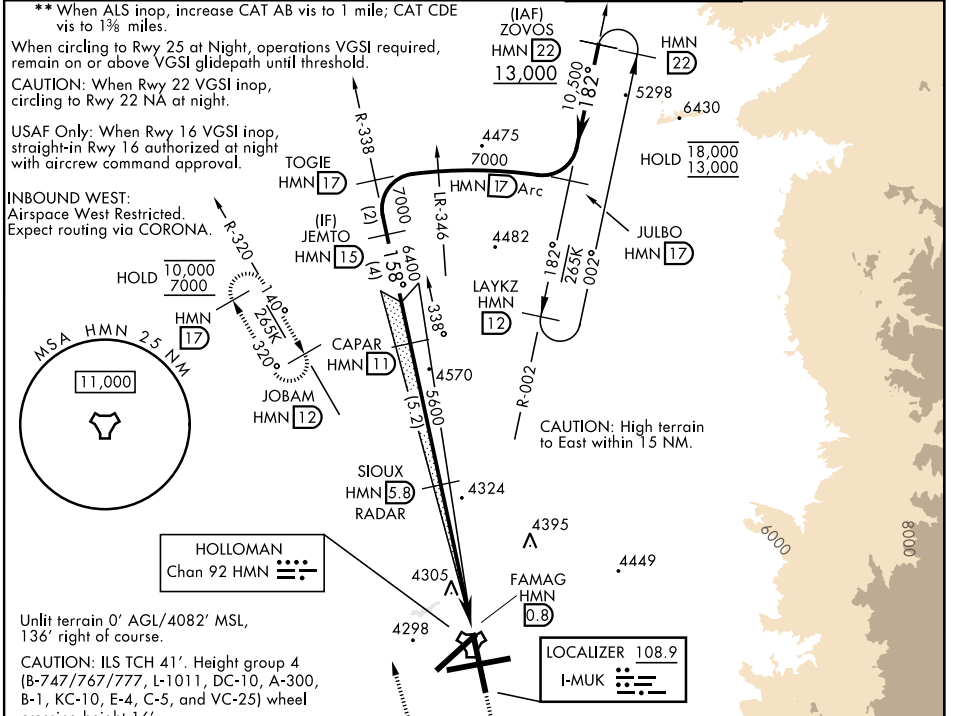
LOC I-MUK 108.9	APCH CRS 158°	Rwy ldg 12,134 TDZE 4083 Arpt Elev 4093
---------------------------	-------------------------	---

[USAF]

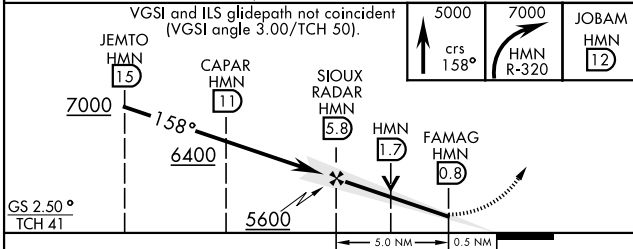
HOLLOMAN AFB (KHMN)

RADAR or DME required.	ALSIF-1 	MISSED APPROACH: Climb straight ahead to 7000, passing 5000 turn right and intercept HMN R-320 outbound to JOBAM and hold.
------------------------	-------------	--

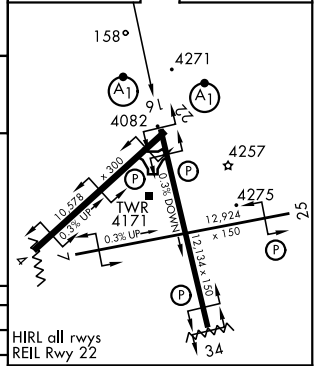
ATIS * 273.5	ALBUQUERQUE CENTER 132.65 257.6	APP CON 120.6 269.225	TOWER * 119.3 254.4	GND CON 127.05 275.8
------------------------	---	---------------------------------	-------------------------------	--------------------------------



EMERG SAFE ALT 100 NM 14,200



ELEV 4093	TDZE 4083
-----------	-----------



CATEGORY	A	B	C	D	E
S-ILS 16*	4283-1/2		200	(200-1/2)	
S-LOC 16**	4600-1/2 517 (600-1/2)		4600-1	517	(600-1)
CIRCLING	4620-1	527 (600-1)	5200-3	1107 (1200-3)	5300-3 1207 (1300-3)

HIRL all rwys REIL Rwy 22					
FAF to MAP 5.0 NM					
Knots	60	90	120	150	180
Min:Sec	5:00	3:20	2:30	2:00	1:40

ALAMOGORDO, NEW MEXICO

32° 52'N-106° 06'W

HOLLOMAN AFB (KHMN)

Amtd 6 19MAR26

ILS or LOC X RWY 16

SW-1, 14 MAY 2026 to 11 JUN 2026

SW-1, 14 MAY 2026 to 11 JUN 2026