

ALAMOGORDO, NEW MEXICO

RNAV (GPS) RWY 16

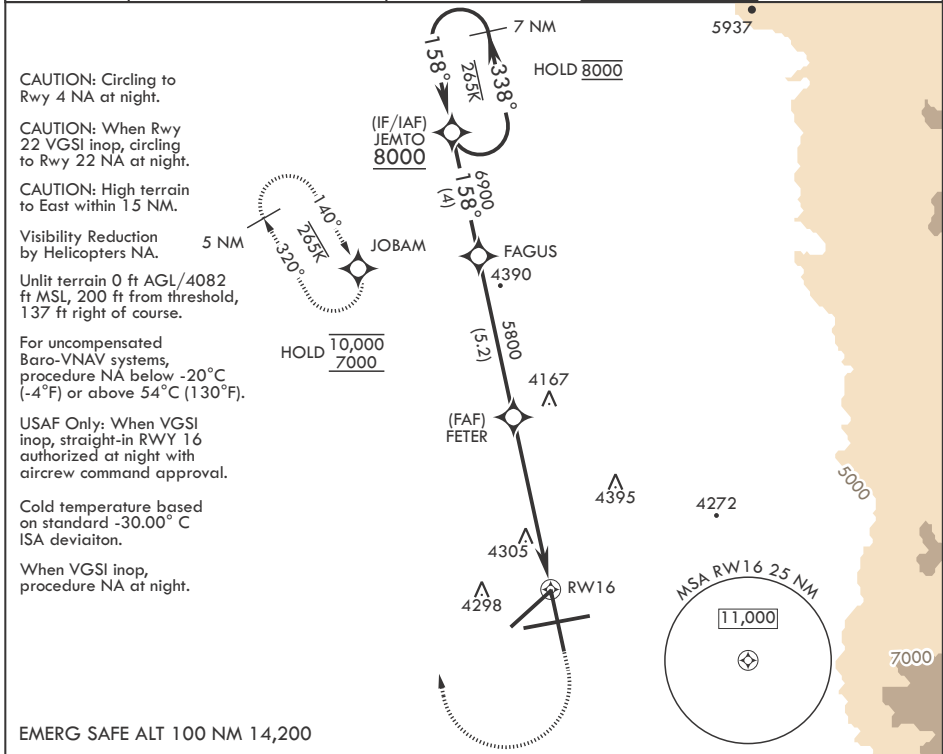
APCH CRS 158°	Rwy Idg 12,134
	TDZE 4083
	Arprt Elev 4093

(USAF)

HOLLOMAN AFB (KHMN)

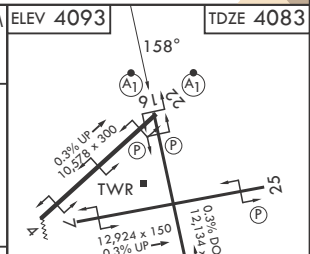
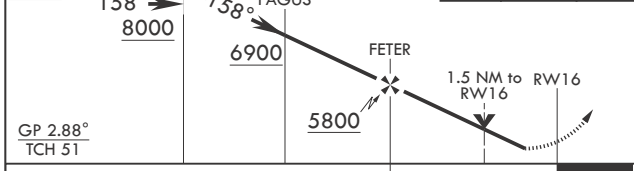
RNP APCH-GPS	ALSF-1	MISSED APPROACH: Climb straight ahead to 7000, passing 5000 turn direct JOBAM, do not exceed 265 KIAS until turn completion and hold.
<p>▼ * When ALS inop, increase vis to 1 1/8 miles. ** When ALS inop, increase CAT AB vis to 1 mile; CAT CDE vis to 1 3/8 miles.</p>		

ATIS* 273.5	ALBUQUERQUE CENTER 132.65 257.6	APP CON 120.6 269.225	TOWER* 119.3 254.4	GND CON 127.05 275.8
-----------------------	---	---------------------------------	------------------------------	--------------------------------



EMERG SAFE ALT 100 NM 14,200

7 NM Holding Pattern JEMTO	5000	7000	JOBAM	ELEV 4093	TDZE 4083
----------------------------	------	------	-------	-----------	-----------



CATEGORY	A	B	C	D	E
LNAV/VNAV DA*	4485-¾		402	(400-¾)	
LNAV MDA**	4600-½ 517 (600-½)		4600-1	517	(600-1)
CIRCLING	4620-1 527 (600-1)		5200-3 1107 (1200-3)		5300-3 1207 (1300-3)

HIRL all rwys
REIL Rwy 22

ALAMOGORDO, NEW MEXICO

32°52'N - 106°06'W

HOLLOMAN AFB (KHMN)

Amdt 3 25DEC25

RNAV (GPS) RWY 16

SW-1, 14 MAY 2026 to 11 JUN 2026

SW-1, 14 MAY 2026 to 11 JUN 2026