

# RNAV (GPS) RWY 34

APCH CRS <b>338°</b>	Rwy Idg <b>12,134</b>
	TDZE <b>4058</b>
	Arprt Elev <b>4093</b>

(USAF)

HOLLOMAN AFB (KHMN)

RNP APCH-GPS

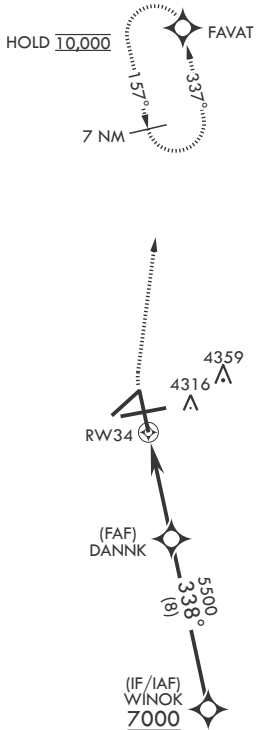
▼ \* When circling to Rwy 25 at night, operational VGSI required, remain on or above VGSI glidepath until threshold.

MISSED APPROACH: Climb to 4800 then climbing right turn to 10,000 direct FAVAT and hold, continue climb-in-hold to 10,000.

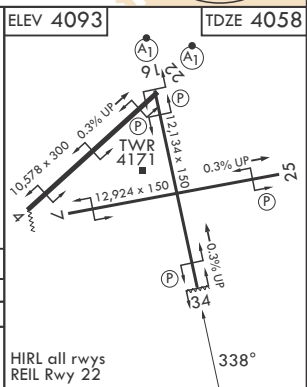
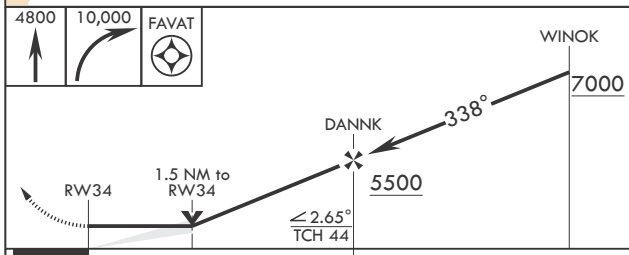
ATIS ★ <b>273.5</b>	ALBUQUERQUE CENTER <b>132.65 257.6</b>	APP CON <b>120.6 269.225</b>	TOWER ★ <b>119.3 254.4</b>	GND CON <b>127.05 275.8</b>
------------------------	---	---------------------------------	-------------------------------	--------------------------------

Visibility reduction by helicopter NA.

CAUTION: High terrain to East within 15 NM.



EMERG SAFE ALT 100 NM 14,200



CATEGORY	A	B	C	D	E
RNAV MDA	4500-1	442 (500-1)	4500-1%	442	(500-1%)
CIRCLING*	4620-1	527 (600-1)	5200-3	1107 (1200-3)	5300-3 1207 (1300-3)

HIRL all rwys  
REIL Rwy 22

# RNAV (GPS) RWY 34

SW-1, 14 MAY 2026 to 11 JUN 2026

SW-1, 14 MAY 2026 to 11 JUN 2026