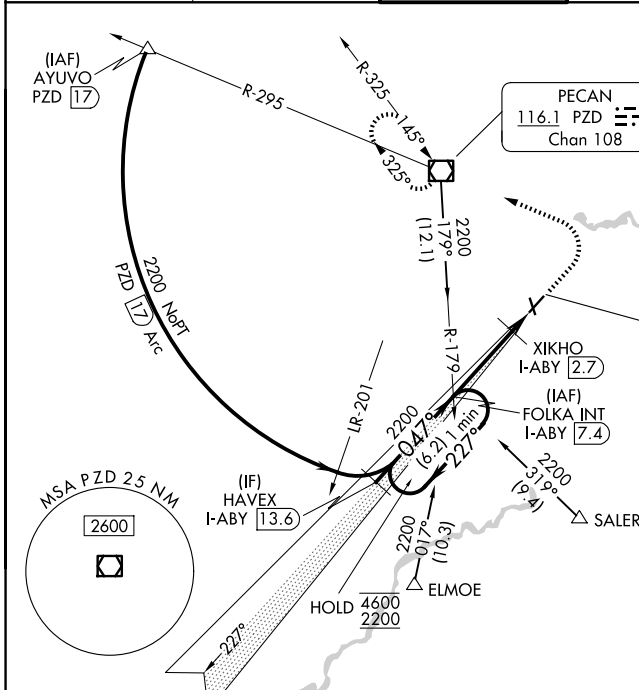


LOC/DME I-ABY 108.5 Chan 22	APP CRS 047°	Rwy Ldg 6601 TDZE 196 Apt Elev 196
---	------------------------	---

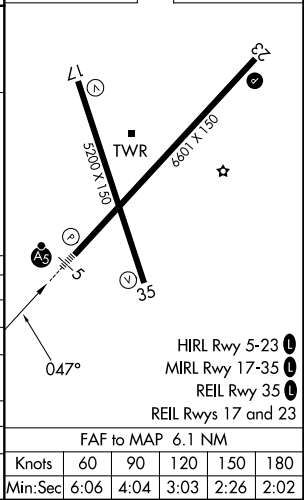
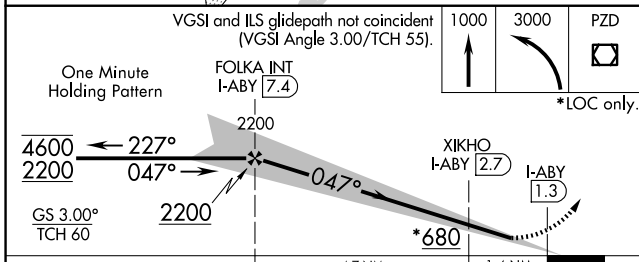
ILS or LOC RWY 5

SOUTHWEST GEORGIA RGNL (ABY)

From ELMOE and SALER: RNAV-1 GPS required.		MALSR	MISSED APPROACH: Climb to 1000 then climbing left turn to 3000 direct PZD VOR/DME and hold.	
<p>For inop ALS, increase S-LOC 5 Cats C/D visibility to 1½ SM and XIKHO fix minimums S-LOC 5 Cats C/D visibility to RVR 5500.</p>				
ATIS 133.05	JACKSONVILLE CENTER 125.75 363.075	ALBANY TOWER * 120.25 (CTAF) 0336.4	GND CON 121.9 348.6	UNICOM 122.95



ELEV 196	TDZE 196
----------	----------



CATEGORY	A	B	C	D
S-ILS 5		396/24	200 (200-½)	
S-LOC 5	680/24	484 (500-½)	680/50	484 (500-1)
CIRCLING	680-1	484 (500-1)	940-2¼ 744 (800-2¼)	940-2½ 744 (800-2½)
XIKHO FIX MINIMUMS (DME REQUIRED)				
S-LOC 5	560/24	364 (400-½)	560/35	364 (400-¾)
CIRCLING	640-1 444 (500-1)	660-1 464 (500-1)	940-2¼ 744 (800-2¼)	940-2½ 744 (800-2½)

FAF to MAP 6.1 NM					
Knots	60	90	120	150	180
Min:Sec	6:06	4:04	3:03	2:26	2:02

SE-4, 14 MAY 2026 to 11 JUN 2026

SE-4, 14 MAY 2026 to 11 JUN 2026