

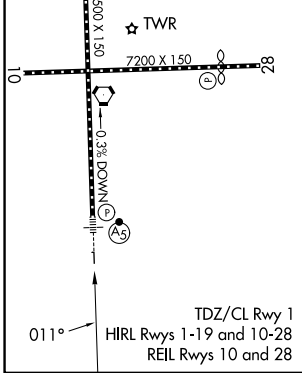
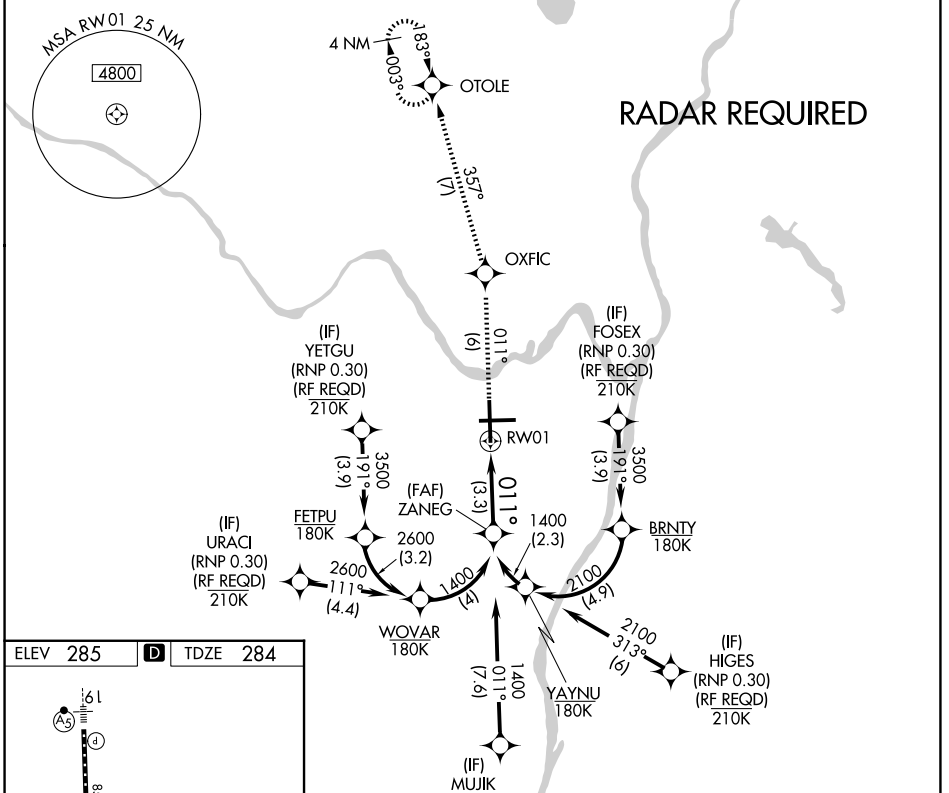
APP CRS <b>011°</b>	Rwy Ldg TDZE Apt Elev	<b>8500</b> <b>284</b> <b>285</b>
------------------------	-----------------------------	---

# RNAV (RNP) Z RWY 1

ALBANY INTL (ALB)

GPS required. For uncompensated Baro-VNAV systems, procedure NA below -1.5°C (3°F) or above 47°C (117°F). For inoperative MALSR, increase RNP 0.15 visibility to 1/4 and RNP 0.30 visibility to 1/2.	MALSR 	MISSED APPROACH: Climb to 3000 on track 011° to OXFIC and on track 357° to OTOLE and hold.		
	D-ATIS <b>120.45</b>	ALBANY APP CON <b>132.825 307.2</b>	ALBANY TOWER <b>119.5 257.8</b>	GND CON <b>121.7 348.6</b>

D-ATIS <b>120.45</b>	ALBANY APP CON <b>132.825 307.2</b>	ALBANY TOWER <b>119.5 257.8</b>	GND CON <b>121.7 348.6</b>	CLNC DEL <b>127.50</b>
-------------------------	--	------------------------------------	-------------------------------	---------------------------



3000 ↑	OXFIC tr 011°	OTOLE tr 357°	ZANEG 1400
See planview for multiple IF locations.			
RW01			GP 3.00° TCH 56

CATEGORY	A	B	C	D
RNP 0.15 DA		656/40	372 (400-3/4)	
RNP 0.30 DA		727/50	443 (500-1)	

**AUTHORIZATION REQUIRED**