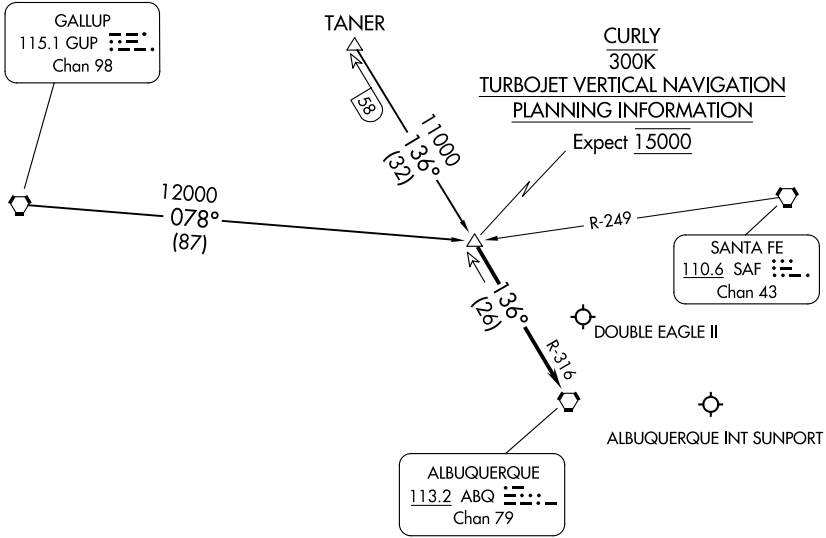


CURLY THREE ARRIVAL

ALBUQUERQUE APP CON
127.4 253.5
ABQ D-ATIS
118.0 257.7
AEG ATIS
119.025



SW-1, 14 MAY 2026 to 11 JUN 2026

SW-1, 14 MAY 2026 to 11 JUN 2026

NOTE: Chart not to scale.

ARRIVAL ROUTE DESCRIPTION

GALLUP TRANSITION (GUP.CURLY3): From over GUP VORTAC on GUP R-078 to CURLY. Thence. . .

TANER TRANSITION (TANER.CURLY3): From over TANER on ABQ R-316 to CURLY. Thence. . .

. . . From over CURLY on ABQ R-316 to ABQ VORTAC. Expect vectors to final approach course after passing CURLY.

CURLY THREE ARRIVAL