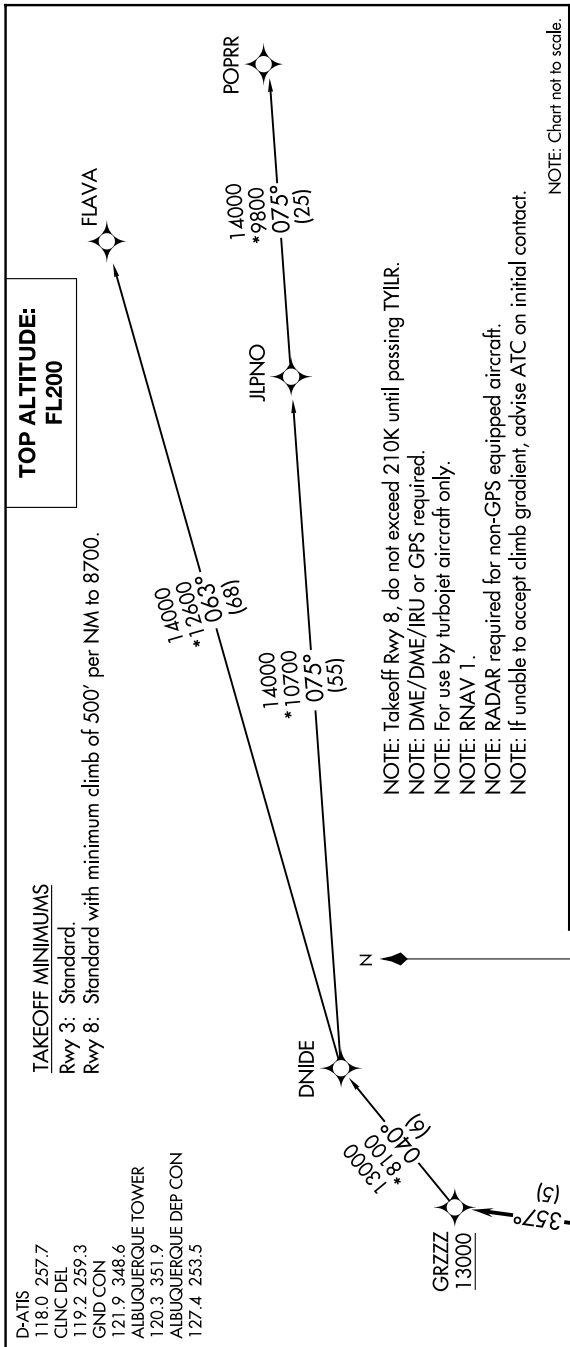


# GRZZ FOUR DEPARTURE (RNAV)

AL-12 (FAA)

ALBUQUERQUE INTL SUNPORT (ABQ)  
ALBUQUERQUE, NEW MEXICO

SW-1, 14 MAY 2026 to 11 JUN 2026



NOTE: Chart not to scale.

## DEPARTURE ROUTE DESCRIPTION

**TAKEOFF RUNWAY 3:** Climb on heading 034° to 5860, then left turn direct ROWHO, then on track 357° to cross GRZZ at or above 13000, thence . . . .

**TAKEOFF RUNWAY 8:** Climb on heading 079° to 5860 and direct TYILR at or above 5900, then left turn direct ROWHO, then on track 357° to cross GRZZ at or above 13000, thence . . . .

. . . . (transition). Maintain FL200, expect filed altitude ten minutes after departure.

FLAVA TRANSITION (GRZZ4.FLAVA)

JLPNO TRANSITION (GRZZ4.JLPNO)

POPRR TRANSITION (GRZZ4.POPRR)

**TAKEOFF MINIMUMS**  
 Rwy 3: Standard.  
 Rwy 8: Standard with minimum climb of 500' per NM to 8700.

D-ATIS  
 118.0 257.7  
 CLNC DEL  
 119.2 259.3  
 GND CON  
 121.9 348.6  
 ALBUQUERQUE TOWER  
 120.3 351.9  
 ALBUQUERQUE DEP CON  
 127.4 253.5



N

# GRZZ FOUR DEPARTURE (RNAV)

ALBUQUERQUE, NEW MEXICO  
ALBUQUERQUE INTL SUNPORT (ABQ)

SW-1, 14 MAY 2026 to 11 JUN 2026