


LOC/DME I-SPT <b>111.9</b> Chan <b>56</b>	APP CRS <b>079°</b>	Rwy Ldg <b>12793</b> TDZE <b>5320</b> Apt Elev <b>5355</b>
---	------------------------	--

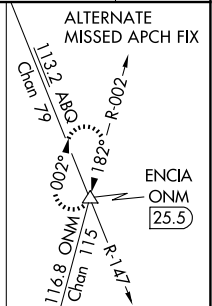
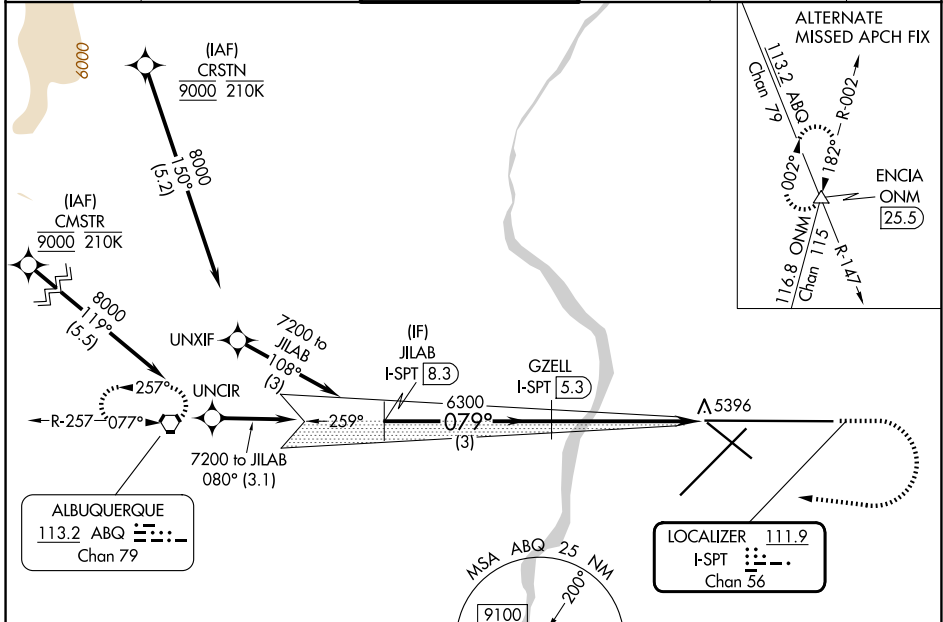
# ILS or LOC RWY 8

## ALBUQUERQUE INTL SUNPORT (ABQ)

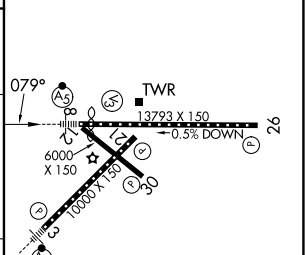
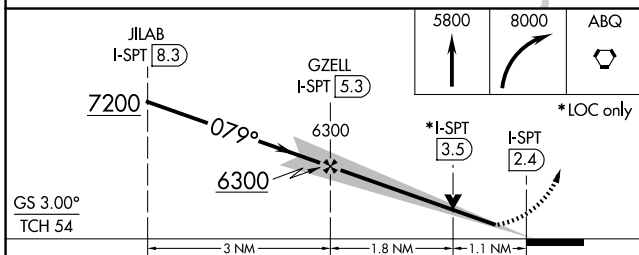
DME required. RNAV 1 - GPS or RADAR required for procedure entry.  
 For inop ALS, increase S-LOC 8 Cat C and D visibility to RVR 6000.  
 ASR

MALSR  
  
 MISSED APPROACH: Climb to 8000 then climbing right turn to 8000 direct ABQ VORTAC and hold.

D-ATIS <b>118.0 257.7</b>	ALBUQUERQUE APP CON <b>123.9 354.1</b>	ALBUQUERQUE TOWER <b>120.3 351.9</b>	GND CON <b>121.9 348.6</b>	CLNC DEL <b>119.2 259.3</b>	CPDLC
------------------------------	---	---	-------------------------------	--------------------------------	-------



ELEV 5355	<b>D</b> TDZE 5320
-----------	--------------------



CATEGORY	A	B	C	D
S-ILS 8	5527/18		207 (200-½)	
S-LOC 8	5720/24	400 (400-½)	5720/40	400 (400-¾)
CIRCLING	5840-1 485 (500-1)	5920-1 565 (600-1)	5940-1½ 585 (600-1½)	NA

MIRL Rwy 12-30 TDZ/CL Rwys 3 and 8 HIRL Rwys 3-21 and 8-26 REIL Rwys 21, 26, and 30					
FAF to MAP 2.9 NM					
Knots	60	90	120	150	180
Min:Sec	2:54	1:56	1:27	1:10	0:58

SW-1, 14 MAY 2026 to 11 JUN 2026

SW-1, 14 MAY 2026 to 11 JUN 2026