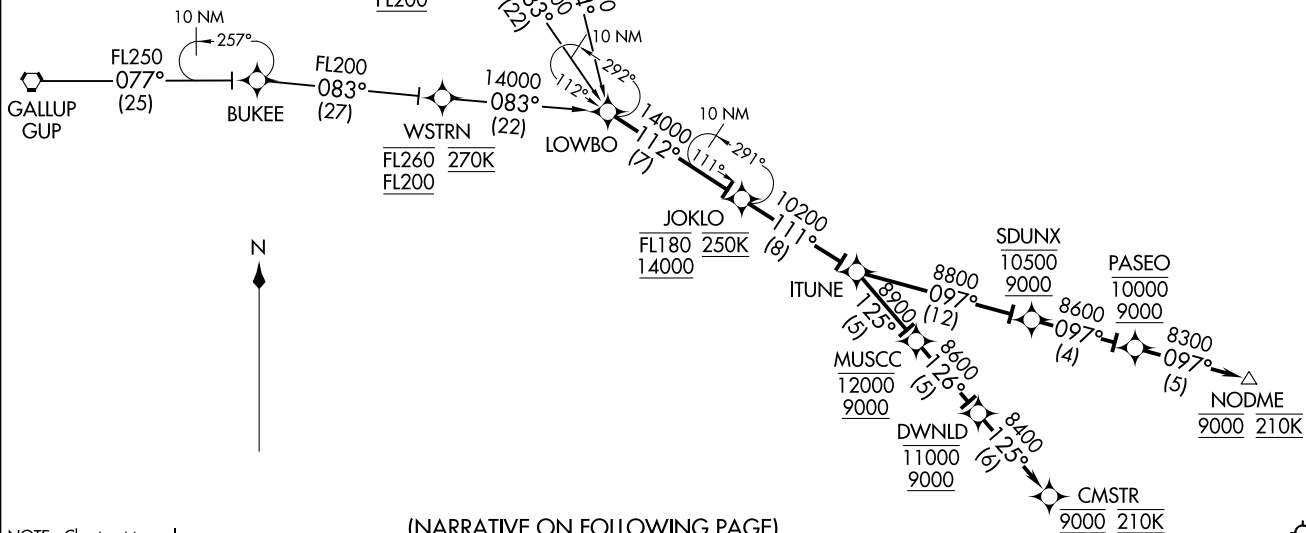


LOWBO THREE ARRIVAL (RNAV)
(LOWBO.LOWBO3) 08JAN15

D-ATIS
118.0 257.7
ALBUQUERQUE APP CON
123.9 354.1



- NOTE: RADAR required.
- NOTE: RNAV 1.
- NOTE: DME/DME/IRU or GPS required.
- NOTE: Turbojet aircraft only.
- NOTE: BRMLY and ROSEI TRANSITIONS: For non-GPS equipped aircraft, SAF DME must be operational.
- NOTE: Landing Runway 3: Expect RNAV (RNP) approach clearance or RADAR vectors to final approach course prior to CMSTR.
- NOTE: Landing Runway 8: Expect RNAV (RNP) or ILS approach clearance or RADAR vectors to final approach course prior to CMSTR.
- NOTE: Landing Runways 21, 26: Expect RNAV (RNP) approach clearance or RADAR vectors to final approach course prior to NODME.

(NARRATIVE ON FOLLOWING PAGE)

NOTE: Chart not to scale.

LOWBO.LOWBO3) 17117
LOWBO THREE ARRIVAL (RNAV)

AL-12 (FAA)

ALBUQUERQUE INTL SUNPORT (ABQ)
ALBUQUERQUE, NEW MEXICO

ARRIVAL ROUTE DESCRIPTION

BRMLY TRANSITION (BRMLY.LOWBO3)

GALLUP TRANSITION (GUP.LOWBO3)

ROSEI TRANSITION (ROSEI.LOWBO3)

From LOWBO on track 112° to cross JOKLO between 14000 and FL180 and at 250K, then on track 111° to ITUNE.

LANDING RUNWAY 3: From ITUNE on track 125° to cross MUSCC between 9000 and 12000, then on track 126° to cross DWNLD between 9000 and 11000, then on track 125° to cross CMSTR at 9000 and at 210K. Expect RNAV (RNP) approach or RADAR vectors to final approach course.

LANDING RUNWAY 8: From ITUNE on track 125° to cross MUSCC between 9000 and 12000, then on track 126° to cross DWNLD between 9000 and 11000, then on track 125° to cross CMSTR at 9000 and at 210K. Expect RNAV (RNP) or ILS approach or RADAR vectors to final approach course.

LANDING RUNWAYS 21/26: From ITUNE on track 097° to cross SDUNX between 9000 and 10500, then on track 097° to cross PASEO between 9000 and 10000, then on track 097° to cross NODME at 9000 and at 210K. Expect RNAV (RNP) approach or RADAR vectors to final approach course.

SW-1, 14 MAY 2026 to 11 JUN 2026

SW-1, 14 MAY 2026 to 11 JUN 2026