

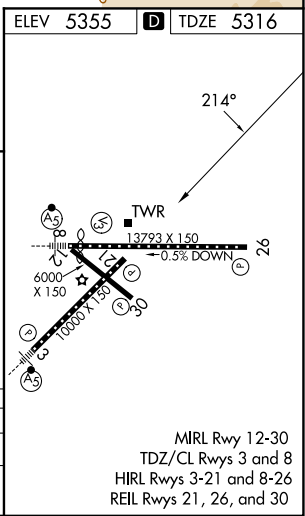
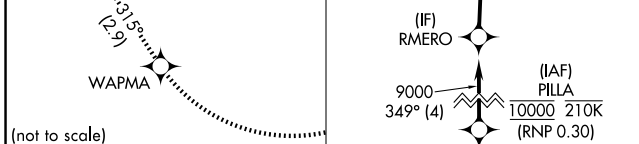
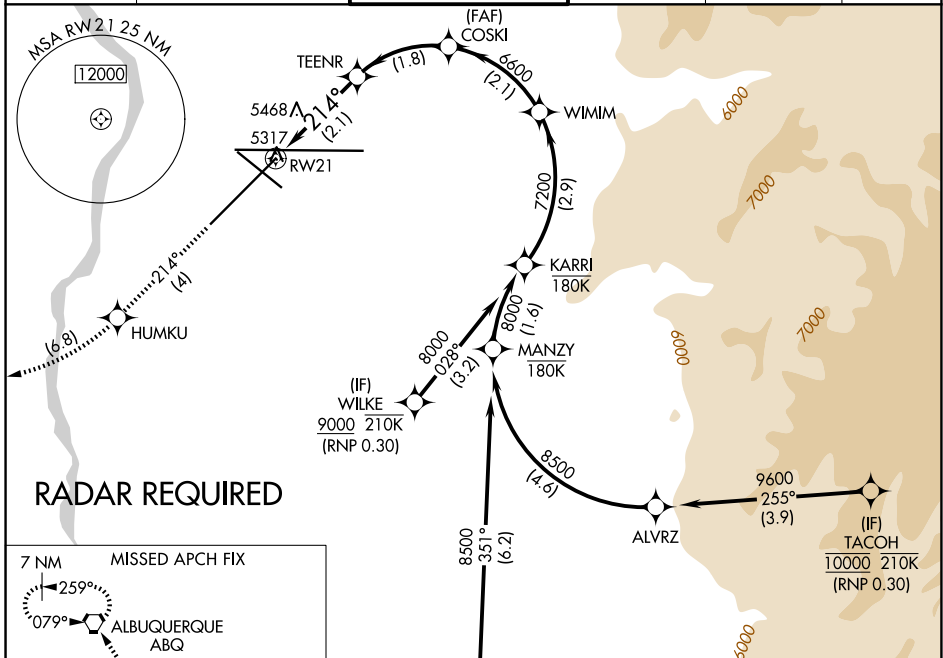
APP CRS <b>214°</b>	Rwy Ldg TDZE Apt Elev	<b>10000</b> <b>5316</b> <b>5355</b>
------------------------	-----------------------------	--

# RNAV (RNP) Z RWY 21

ALBUQUERQUE INTL SUNPORT (ABQ)

ASR	For uncompensated Baro-VNAV systems, procedure NA below -12°C (11°F) or above 47°C (116°F). RF required. GPS required.	MISSED APPROACH: Climb to 8000 on track 214° to HUMKU, right turn to WAPMA, then on track 315° to ABQ VORTAC and hold.

D-ATIS <b>118.0 257.7</b>	ALBUQUERQUE APP CON <b>123.9 354.1</b>	ALBUQUERQUE TOWER <b>120.3 351.9</b>	GND CON <b>121.9 348.6</b>	CLNC DEL <b>119.2 259.3</b>	CPDLC
------------------------------	---	---	-------------------------------	--------------------------------	-------



8000	HUMKU	WAPMA	ABQ	See planview for multiple IF locations.
tr 214°			tr 315°	
VGS1 and RNAV glidepath not coincident (VGS1 Angle 3.00/TCH 74).				
RWY 21	TEENR	COSKI	WIMM	KARRI
2.1 NM	1.8 NM	2.1 NM	2.9 NM	
6030	6600	7200	8000	
GP 3.00° TCH 55				

CATEGORY	A	B	C	D
RNP 0.30 DA	5755-1½		439 (400-1½)	

## AUTHORIZATION REQUIRED

SW-1, 14 MAY 2026 to 11 JUN 2026

SW-1, 14 MAY 2026 to 11 JUN 2026