

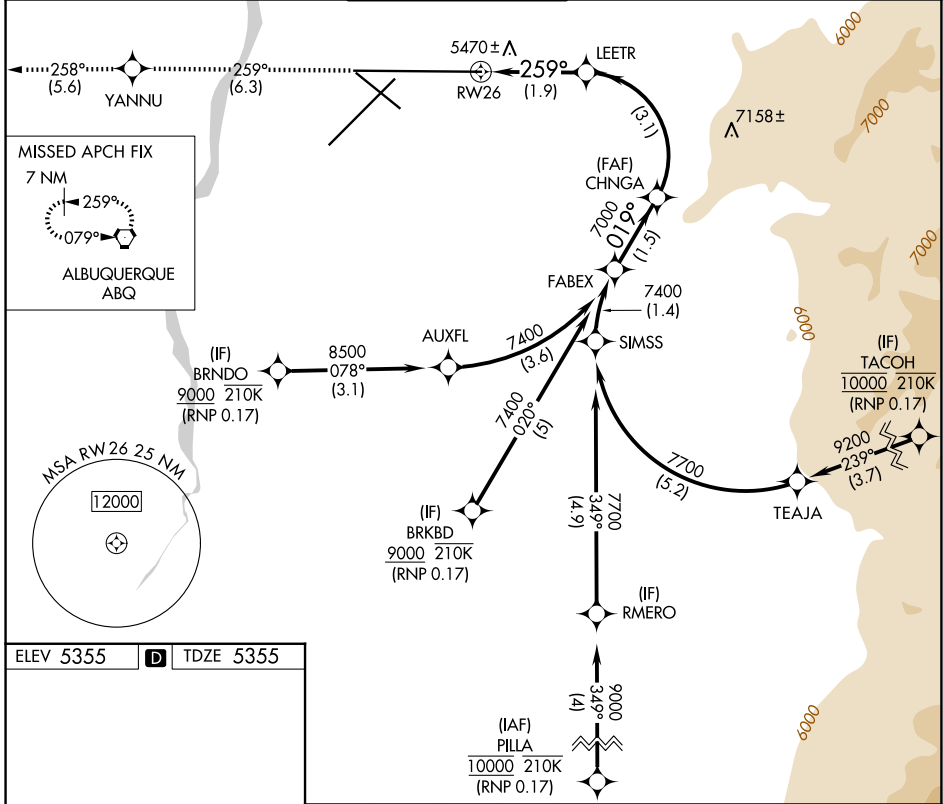
APP CRS 259°	Rwy Ldg TDZE Apt Elev	13793 5355 5355
------------------------	-----------------------------	--

RNAV (RNP) Z RWY 26

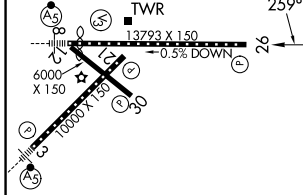
ALBUQUERQUE INTL SUNPORT (ABQ)

RNP AR APCH, RF required.	MISSED APPROACH: Climb to 8000 on track 259° to YANNU and on track 258° to ABQ VORTAC and hold.
▼ For uncompensated Baro-VNAV systems, procedure NA ASR below -13°C or above 48°C.	

D-ATIS 118.0 257.7	ALBUQUERQUE APP CON 123.9 354.1	ALBUQUERQUE TOWER 120.3 351.9	GND CON 121.9 348.6	CLNC DEL 119.2 259.3	CPDLC
------------------------------	---	---	-------------------------------	--------------------------------	-------



ELEV 5355	D	TDZE 5355
-----------	----------	-----------



8000	YANNU	tr 258°	ABQ	VGSI and RNAV glidepath not coincident (VGSI Angle 3.00/TCH 83).	FABEX
				CHNGA	
				LEETR	
				7000	
				019°	7400
				7000	
					GP 3.00° TCH 50
				1.9 NM	3.1 NM
				1.5 NM	

MIRL Rwy 12-30	TDZ/CL Rlys 3 and 8	HIRL Rlys 3-21 and 8-26	REIL Rlys 21, 26, and 30	
CATEGORY	A	B	C	D
RNP 0.17 DA	5745-1¼		390 (400-1¼)	
AUTHORIZATION REQUIRED				

SW-1, 14 MAY 2026 to 11 JUN 2026

SW-1, 14 MAY 2026 to 11 JUN 2026