

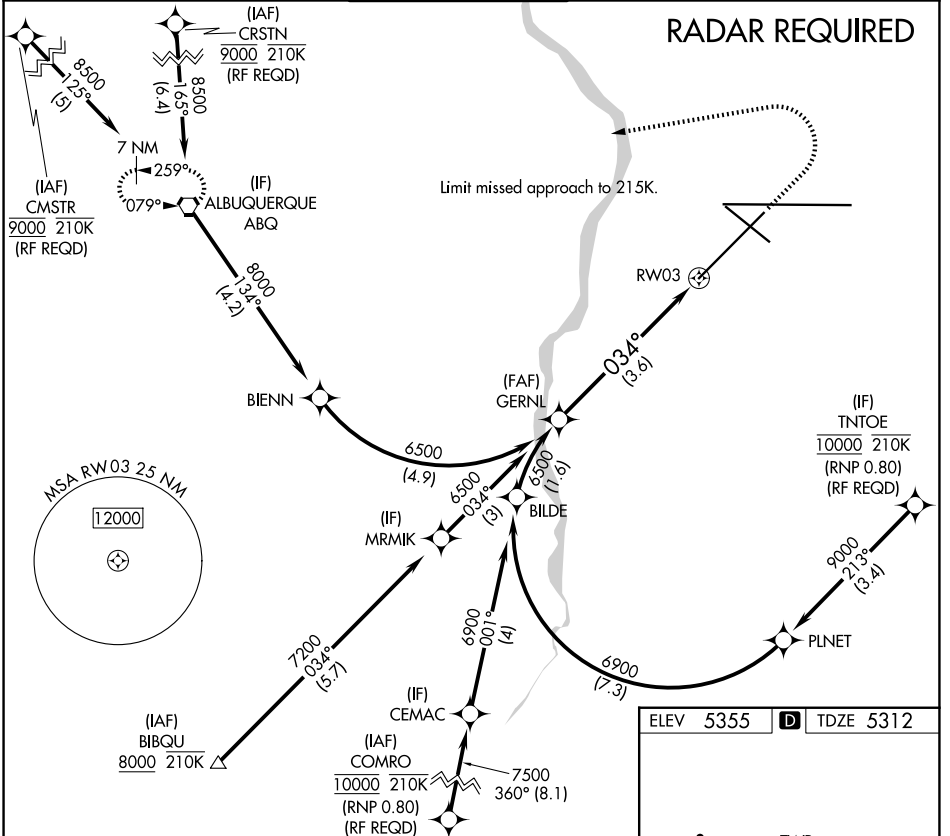
APP CRS 034°	Rwy Ldg 9754
	TDZE 5312
	Apt Elev 5355

RNAV (RNP) Z RWY 3

ALBUQUERQUE INTL SUNPORT (ABQ)

ASR	For uncompensated Baro-VNAV systems, procedure NA below -12°C (11°F) or above 45°C (114°F). For inop MALSRL, increase RNP 0.30 all Cats visibility to RVR 4000. GPS required.	MALSRL	MISSED APPROACH: Climb to 6200 then climbing left turn to 8000 direct ABQ VORTAC and hold.
-----	---	--------	--

D-ATIS 118.0 257.7	ALBUQUERQUE APP CON 123.9 354.1	ALBUQUERQUE TOWER 120.3 351.9	GND CON 121.9 348.6	CLNC DEL 119.2 259.3	CPDLC
------------------------------	---	---	-------------------------------	--------------------------------	-------



SW-1, 14 MAY 2026 to 11 JUN 2026

SW-1, 14 MAY 2026 to 11 JUN 2026

GERNL	See planview for multiple IF locations.	6200	8000	ABQ
6500				
GP 3.00°	034°			
TCH 60				
		3.6 NM		
CATEGORY	A	B	C	D
RNP 0.30 DA	5571/24		259 (300-½)	
AUTHORIZATION REQUIRED				

