

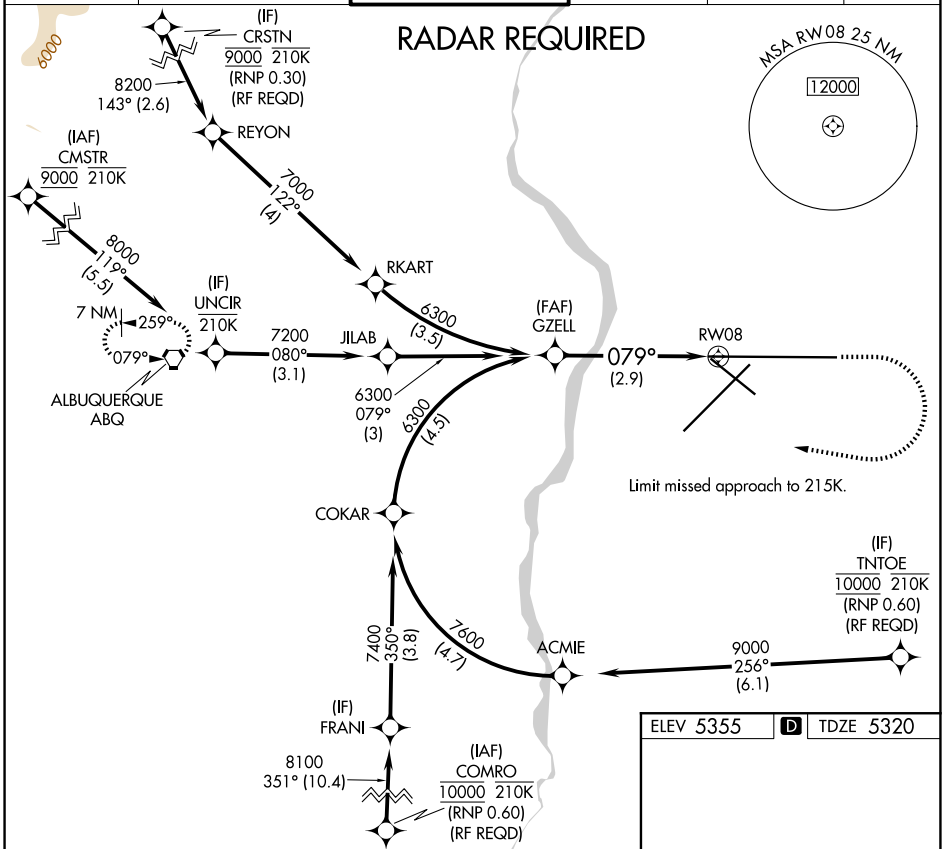
APP CRS 079°	Rwy Ldg TDZE Apt Elev	12793 5320 5355
------------------------	-----------------------------	--

RNAV (RNP) Z RWY 8

ALBUQUERQUE INTL SUNPORT (ABQ)

ASR	For uncompensated Baro-VNAV systems, procedure NA below -12°C (11°F) or above 47°C (117°F). For inop MALSRS, increase RNP 0.30 all Cats visibility to RVR 4700. GPS required.	MALSRS	MISSED APPROACH: Climb to 5900 then climbing right turn to 8000 direct ABQ VORTAC and hold.
-----	---	--------	---

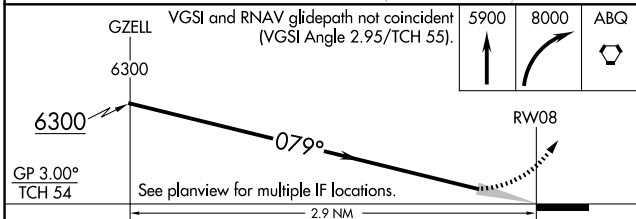
D-ATIS 118.0 257.7	ALBUQUERQUE APP CON 123.9 354.1	ALBUQUERQUE TOWER 120.3 351.9	GND CON 121.9 348.6	CLNC DEL 119.2 259.3	CPDLC
------------------------------	---	---	-------------------------------	--------------------------------	-------



SW-1, 14 MAY 2026 to 11 JUN 2026

SW-1, 14 MAY 2026 to 11 JUN 2026

ELEV 5355	D	TDZE 5320
-----------	----------	-----------



5900	8000	ABQ
------	------	-----

TWR
13793 X 150
→ 0.5% DOWN

6000 X 150
10000 X 250

MIRL Rwy 12-30
TDZ/CL Rwys 3 and 8
HIRL Rwys 3-21 and 8-26
REIL Rwys 21, 26, and 30

CATEGORY	A	B	C	D
RNP 0.30 DA	5619/24		299 (300-½)	

AUTHORIZATION REQUIRED