

WAAS CH <b>48917</b> <b>W22A</b>	APP CRS <b>225°</b>	Rwy Ldg TDZE Apt Elev	<b>4098</b> <b>1424</b> <b>1425</b>
--	------------------------	-----------------------------	---

# RNAV (GPS) RWY 22

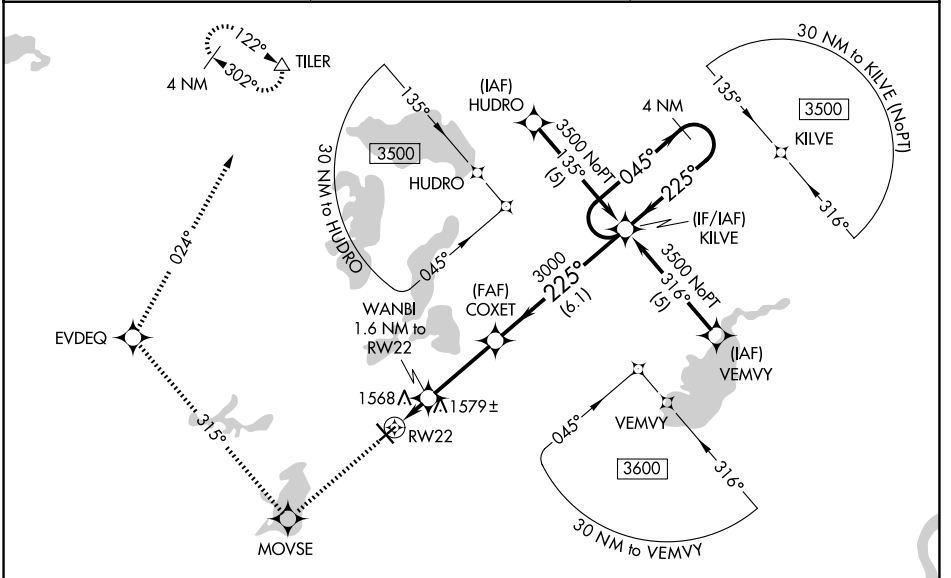
ALEXANDRIA RGNL/CHANDLER FLD (A.XN)

RNP APCH.

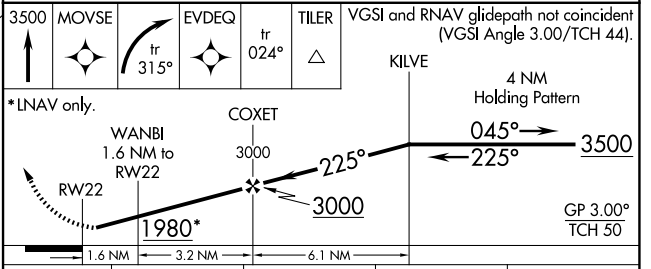
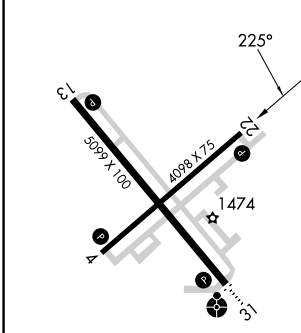
▼ Baro-VNAV NA when using Glenwood altimeter setting. For uncompensated Baro-VNAV systems, LNAV/VNAV NA below -17°C or above 46°C.  
 ▲ When local altimeter setting not received, use Glenwood altimeter setting and increase all DA 37 feet and all MDA 40 feet, increase LNAV/VNAV all Cats and LNAV Cat D visibility ¼ mile. Rwy 22 helicopter visibility reduction below ¾ SM NA.

MISSED APPROACH: Climb to 3500 direct MOVE and right turn on track 315° to EVDEQ and on track 024° to TILER and hold.

ASOS <b>118.375</b>	MINNEAPOLIS CENTER <b>126.1 269.2</b>	UNICOM <b>123.0 (CTAF) 0</b>
------------------------	--	---------------------------------



ELEV 1425	TDZE 1424
-----------	-----------



CATEGORY	A	B	C	D
LPV DA	1677-1 253 (300-1)			
LNAV/VNAV DA	1880-1½ 456 (500-1½)			
LNAV MDA	1840-1 416 (500-1)		1840-1¼ 416 (500-1¼)	

REIL Rws 4, 13, and 22 0  
 MIRL Rws 4-22 and 13-31 0

NC-1, 14 MAY 2026 to 11 JUN 2026

NC-1, 14 MAY 2026 to 11 JUN 2026