

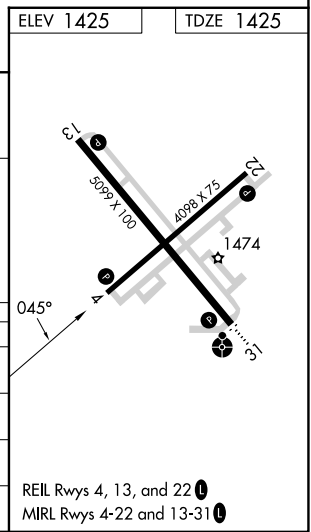
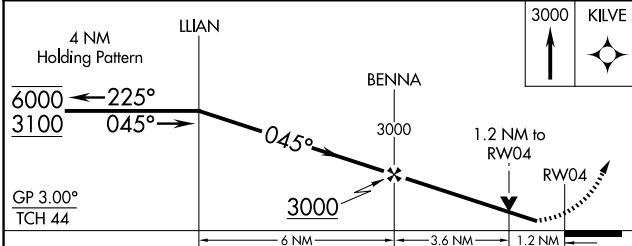
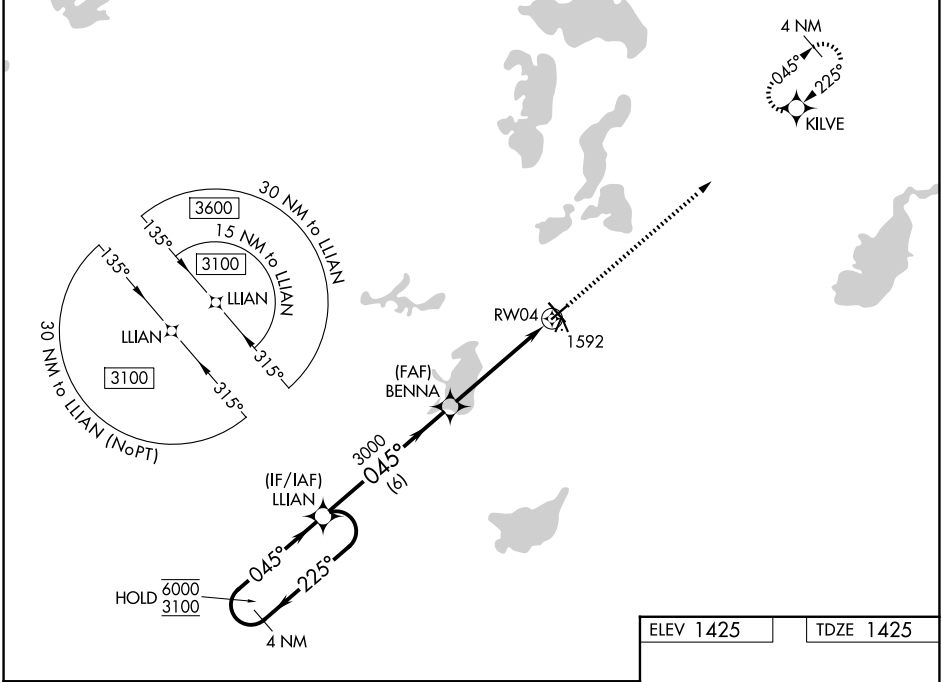
WAAS CH <b>90245</b> <b>W04A</b>	APP CRS <b>045°</b>	Rwy Ldg TDZE Apt Elev	<b>4098</b> <b>1425</b> <b>1425</b>
--	------------------------	-----------------------------	---

# RNAV (GPS) RWY 4

ALEXANDRIA RGNL/CHANDLER FLD (A.XN)

RNP APCH - GPS.	MISSED APPROACH: Climb to 3000 direct KILVE and hold.
<p>▼ Rwy 4 helicopter visibility reduction below 3/4 SM NA.</p> <p>▲ For uncompensated Baro-VNAV systems, LNAV/VNAV NA below -22°C or above 54°C.</p>	

ASOS <b>118.375</b>	MINNEAPOLIS CENTER <b>126.1 269.2</b>	UNICOM <b>123.0 (CTAF) 0</b>
------------------------	--	---------------------------------



CATEGORY	A	B	C	D
LPV DA	1675-1 250 (300-1)			
LNAV/VNAV DA	1826-1 1/8 401 (500-1 1/8)			
LNAV MDA	1860-1	435 (500-1)	1860-1 1/4	435 (500-1 1/4)
CIRCLING	1900-1	475 (500-1)	1940-1 1/2	2000-2
			515 (600-1 1/2)	575 (600-2)

NC-1, 14 MAY 2026 to 11 JUN 2026

NC-1, 14 MAY 2026 to 11 JUN 2026