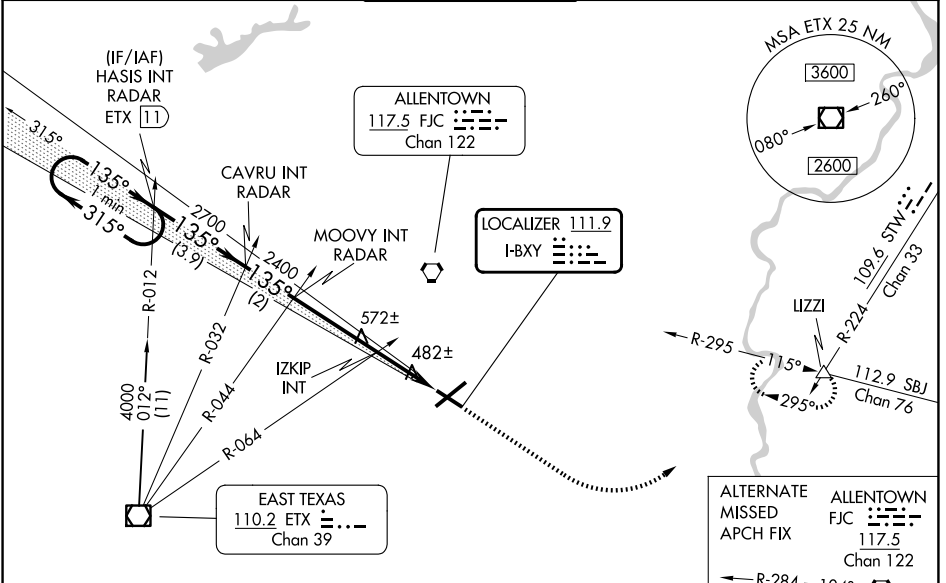


LOC I-BXY 111.9	APP CRS 135°	Rwy Ldg TDZE Apt Elev	5800 386 394
---------------------------	------------------------	-----------------------------	---

ILS or LOC RWY 13

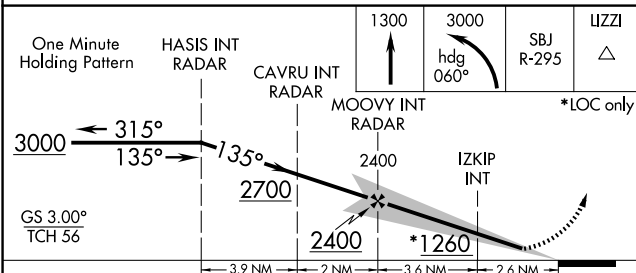
LEHIGH VALLEY INTL (ABE)

<p>⚠ For inoperative MALSR, increase IZKIP fix minimums S-LOC 13 Cat C/D visibility to 1 mile.</p>		<p>MALSR</p>	<p>MISSED APPROACH: Climb to 3000 then climbing left turn to 3000 on heading 060° and on SBJ VOR/DME R-295 to LIZZI INT and hold.</p>	
ATIS 126.975	ALLENTOWN APP CON 119.65 124.45 351.8	ALLENTOWN TOWER 120.5 257.95	GND CON 121.9 257.95	CLNC DEL 124.05 257.95



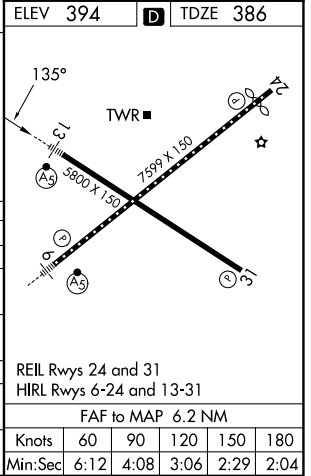
NE-4, 14 MAY 2026 to 11 JUN 2026

NE-4, 14 MAY 2026 to 11 JUN 2026



ELEV 394	TDZE 386
----------	----------

CATEGORY	A	B	C	D
S-ILS 13	586-1/2 200 (200-1/2)			
S-LOC 13	1260-1/2 874 (900-1/2)	1260-3/4 874 (900-3/4)	1260-2	874 (900-2)
CIRCLING	1260-1 1/4	866 (900-1 1/4)	1260-2 1/2 866 (900-2 1/2)	1600-3 1206 (1300-3)
IZKIP FIX MINIMUMS (DUAL VOR RECEIVERS REQUIRED)				
S-LOC 13	740-1/2	354 (400-1/2)	740-5/8	354 (400-5/8)
CIRCLING	840-1 446 (500-1)	900-1 506 (600-1)	1180-2 1/4 786 (800-2 1/4)	1600-3 1206 (1300-3)



REIL Rwy 24 and 31	HIRL Rwy 6-24 and 13-31
FAF to MAP 6.2 NM	
Knots	60 90 120 150 180
Min:Sec	6:12 4:08 3:06 2:29 2:04