

WAAS CH 70635 W34A	APP CRS 337°	Rwy Ldg TDZE Apt Elev	5000 196 200
--	------------------------	-----------------------------	---

RNAV (GPS) RWY 34

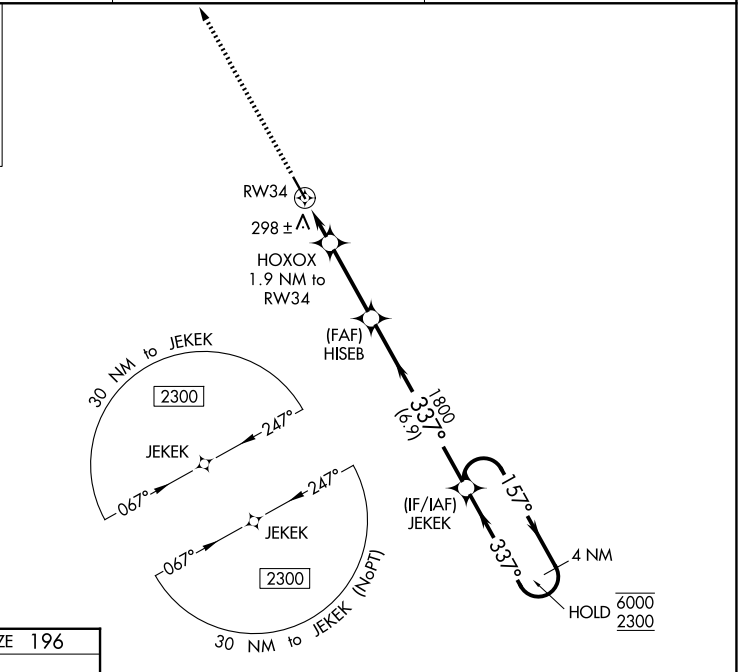
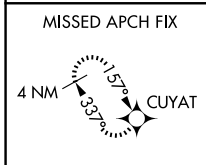
BACON COUNTY (AMG)

RNP APCH-GPS.

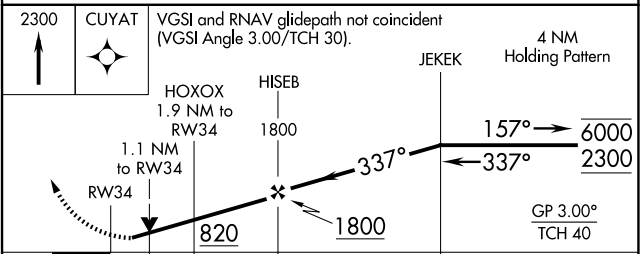
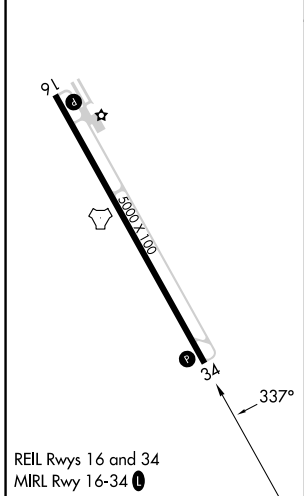
▼ Rwy 34 helicopter visibility reduction below 3/4 SM NA.
▲ For uncompensated Baro-VNAV systems, LNAV/VNAV NA below -4°C or above 54°C.

MISSED APPROACH: Climb to 2300 direct CUYAT and hold.

ASOS 118.325	JACKSONVILLE CENTER 127,575 269,025	UNICOM 122.7 (CTAF) ①
------------------------	---	---------------------------------



ELEV 200	TDZE 196
----------	----------



CATEGORY	A	B	C	D
LPV DA		452-7/8	256 (300-7/8)	
LNAV/VNAV DA		459-7/8	263 (300-7/8)	
LNAV MDA		560-1	364 (400-1)	
CIRCLING	720-1	520 (600-1)	1000-2 1/4 800 (800-2 1/4)	1000-2 1/2 800 (800-2 1/2)

SE-4, 14 MAY 2026 to 11 JUN 2026

SE-4, 14 MAY 2026 to 11 JUN 2026