

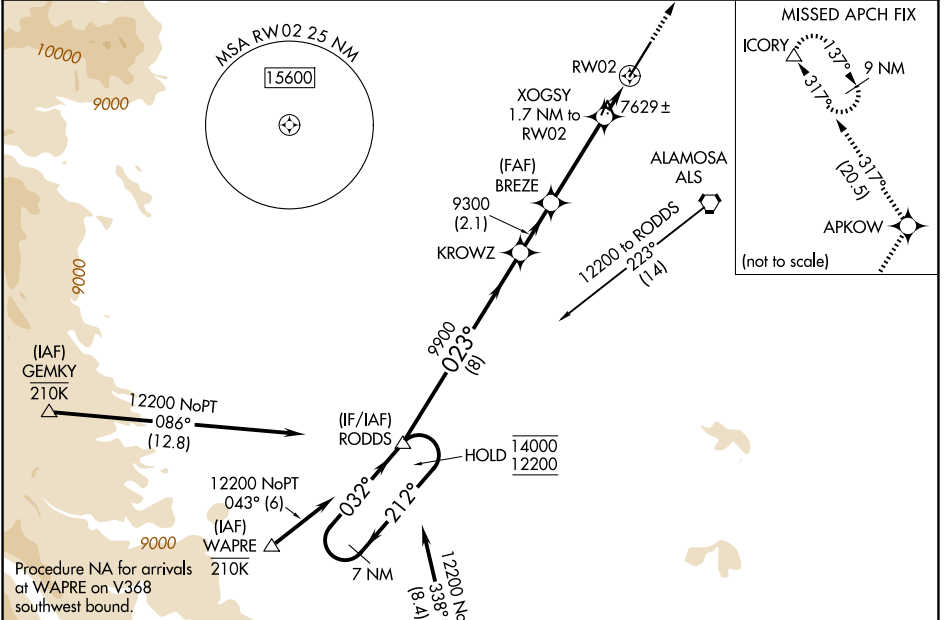
WAAS CH <b>90410</b> <b>W02A</b>	APP CRS <b>023°</b>	Rwy Ldg TDZE <b>7540</b> Apt Elev <b>7540</b>
--	------------------------	---

# RNAV (GPS) RWY 2

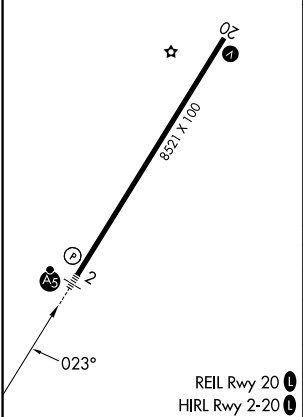
SAN LUIS VALLEY RGNL/BERGMAN FLD (ALS)

RNP APCH-GPS. ▼ For uncompensated Baro-VNAV systems, LNAV/VNAV NA below -31°C or above 54°C. For inop ALS, increase LNAV/VNAV all Cats visibility to ¾ SM. ⚠ -25°C	MALSR AS	MISSED APPROACH: Climb to 14600 direct APKOW and on track 317° to ICORY and hold, continue climb-in-hold to 14600.
--	-------------	--

ASOS <b>135.175</b>	DENVER CENTER <b>128.375 379.95</b>	UNICOM <b>122.8 (CTAF) 0</b>
------------------------	--	---------------------------------



ELEV 7540	<b>D</b>	TDZE 7540
-----------	----------	-----------



	RODDS	KROWZ	BREZE	APKOW	ICORY
	7 NM			fr 317°	△
	14000	9900	9300	XOGSY 1.7 NM to RW02	
	12200	9300	8140	0.9 NM to RW02	
	8 NM	2.1 NM	3.6 NM	0.8 NM	0.9 NM
CATEGORY	A	B	C	D	
LPV DA		7740-½	200 (200-½)		
LNAV/VNAV DA		7790-½	250 (300-½)		
LNAV MDA		7880-½	340 (400-½)		
CIRCLING	8040-1	500 (500-1)	8080-1½ 540 (600-1½)	8100-2 560 (600-2)	

SW-1, 14 MAY 2026 to 11 JUN 2026

SW-1, 14 MAY 2026 to 11 JUN 2026