

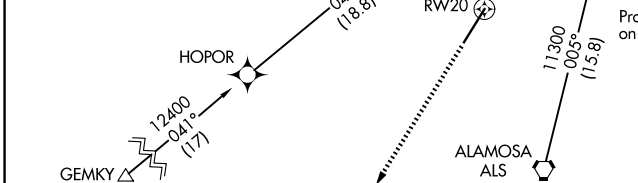
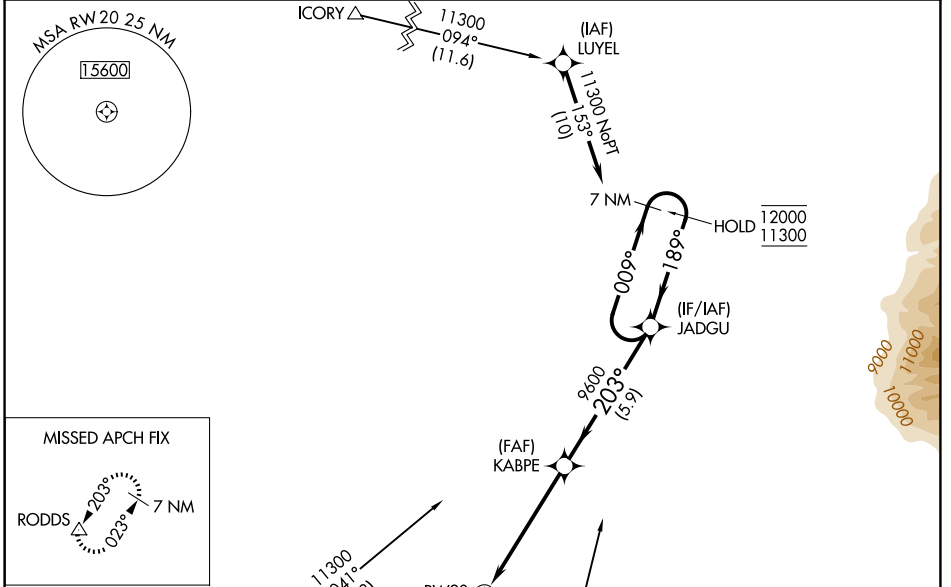
WAAS CH 93500 W20A	APP CRS 203°	Rwy Ldg 8519 TDZE 7540 Apt Elev 7540
--	------------------------	---

RNAV (GPS) RWY 20

SAN LUIS VALLEY RGNL/BERGMAN FLD (ALS)

RNP APCH-GPS.	MISSED APPROACH: Climb to 11500 direct RODDS and hold, continue climb-in-hold to 11500.
<p>▼ Rwy 20 helicopter visibility reduction below 3/4 SM NA. For uncompensated Baro-VNAV systems, LNAV/VNAV NA below -31°C or above 54°C.</p> <p>⚠ -25°C</p>	

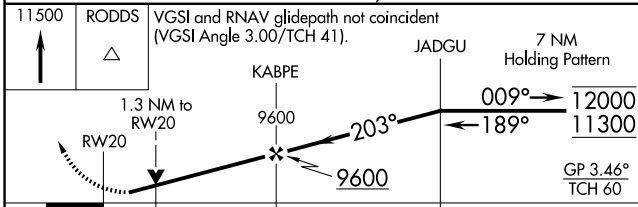
ASOS 135.175	DENVER CENTER 128.375 379.95	UNICOM 122.8 (CTAF) 0
------------------------	--	---------------------------------



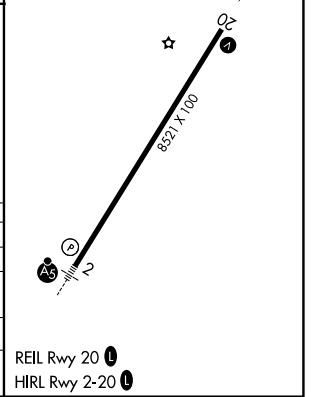
ELEV 7540	D TDZE 7540
-----------	--------------------

7 NM Holding Pattern: 009° → 12000, 189° ← 11300

GP 3.46° TCH 60



CATEGORY	A	B	C	D
LPV DA		7812-7/8	272 (300-7/8)	
LNAV/VNAV DA		7810-7/8	270 (300-7/8)	
LNAV MDA	8000-1	460 (500-1)	8000-1 3/8	460 (500-1 3/8)
CIRCLING	8040-1	500 (500-1)	8080-1 1/2	8100-2
			540 (600-1 1/2)	560 (600-2)



SW-1, 14 MAY 2026 to 11 JUN 2026

SW-1, 14 MAY 2026 to 11 JUN 2026