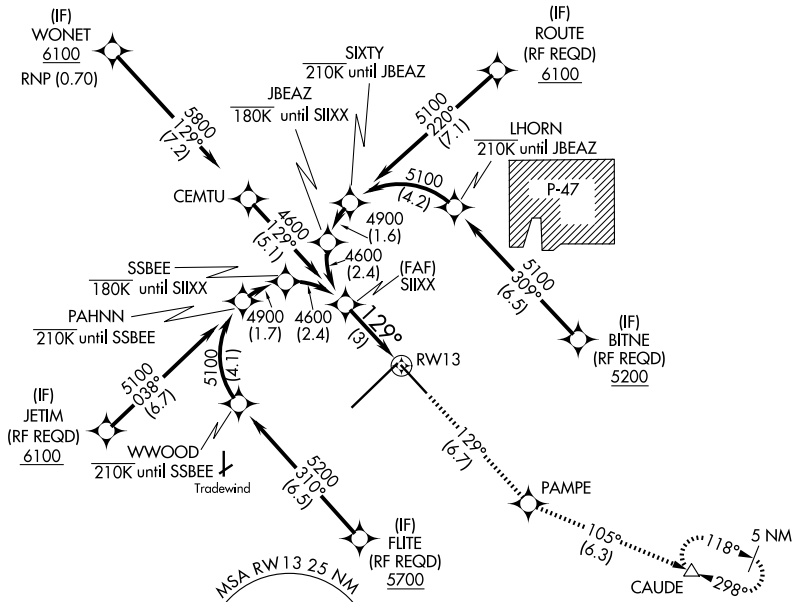


APP CRS	Rwy Ldg	7901
129°	TDZE	3603
	Apt Elev	3607

RNAV (RNP) Z RWY 13

RICK HUSBAND AMARILLO INTL (AMA)

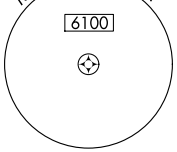
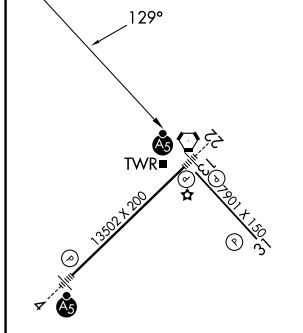
 For uncompensated Baro-VNAV systems, procedure NA below -14°C (7°F) or above 51°C (124°F). GPS required.	MISSED APPROACH: Climb to 5400 on track 129° to PAMPE and track 105° to CAUDE and hold.				
	ATIS 118.85 350.3	AMARILLO APP CON* 119.5 307.0	AMARILLO TOWER* 118.3(CTAF) 257.9	GND CON 121.9 348.6	CLNC DEL 121.65 239.275



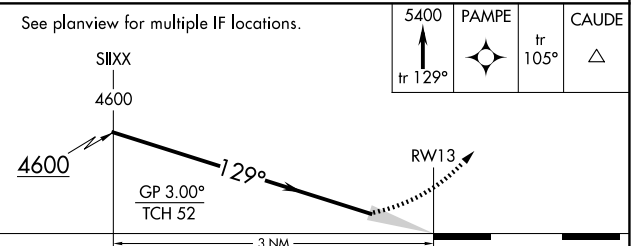
SC-2, 14 MAY 2026 to 11 JUN 2026

SC-2, 14 MAY 2026 to 11 JUN 2026

ELEV	3607	D	TDZE	3603
------	-------------	----------	------	-------------



RNAV 1 - GPS or RADAR REQUIRED



CATEGORY	A	B	C	D
RNP 0.30 DA		3976-1¼	373 (400-1¼)	

AUTHORIZATION REQUIRED