

APP CRS 309°	Rwy Ldg TDZE Apt Elev	7901 3601 3607
------------------------	-----------------------------	---

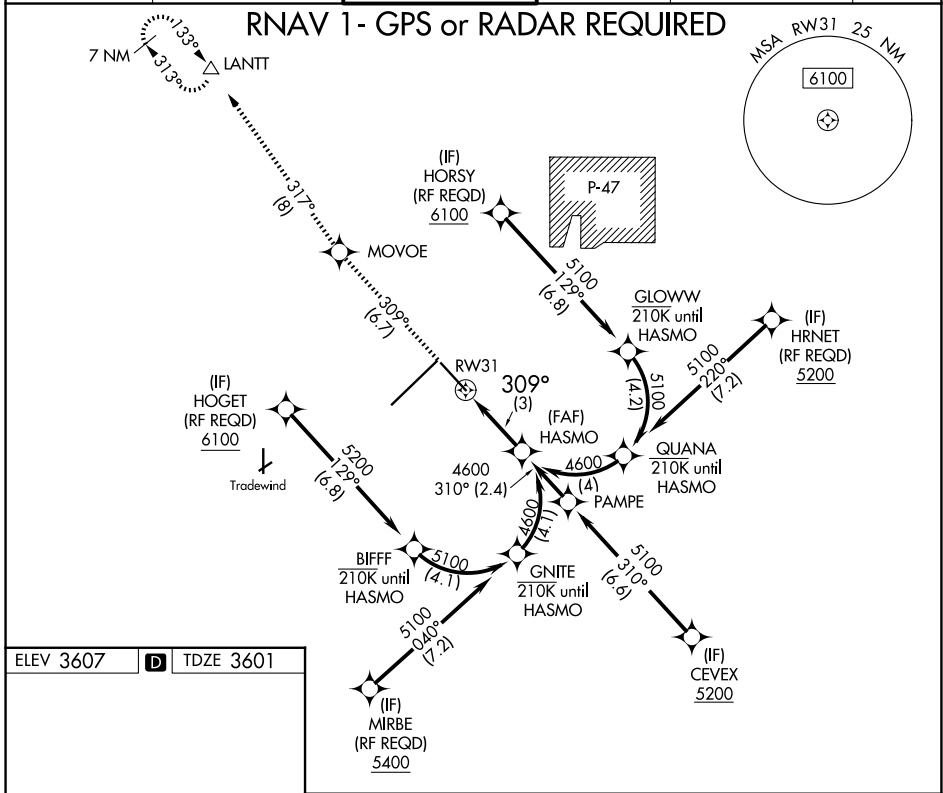
RNAV (RNP) Z RWY 31

RICK HUSBAND AMARILLO INTL (AMA)

ASR For uncompensated Baro-VNAV systems, procedure NA below -14°C (7°F) or above 51°C (124°F). GPS required.

MISSED APPROACH: Climb to 6200 on track 309° to MOVOE and track 317° to LANITT and hold.

ATIS 118.85 350.3	AMARILLO APP CON* 119.5 307.0	AMARILLO TOWER* 118.3(CTAF) 257.9	GND CON 121.9 348.6	CLNC DEL 121.65 239.275	UNICOM 122.95
-----------------------------	---	---	-------------------------------	-----------------------------------	-------------------------



ELEV 3607	D	TDZE 3601
-----------	----------	-----------

REIL Rwy 13
HIRL Rwy 4-22 and 13-31

See planview for multiple IF locations.

6200 ↑ tr 309°	MOVOE ◆	LANITT △
HASMO 4600		GP 3.00° TCH 52

RW31 309° 4600

3 NM

CATEGORY	A	B	C	D
RNP 0.30 DA	3930-1½		329 (400-1½)	

AUTHORIZATION REQUIRED

SC-2, 14 MAY 2026 to 11 JUN 2026

SC-2, 14 MAY 2026 to 11 JUN 2026