

WAAS CH 82718 W04A	APP CRS 038°	Rwy Ldg 13502 TDZE 3607 Apt Elev 3607
--	------------------------	--

RNAV (GPS) Y RWY 4

RICK HUSBAND AMARILLO INTL (AMA)

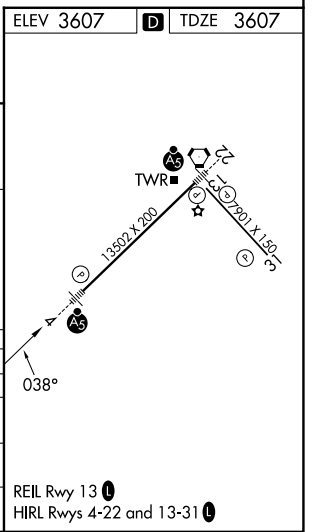
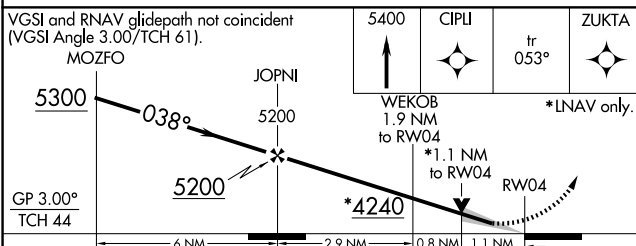
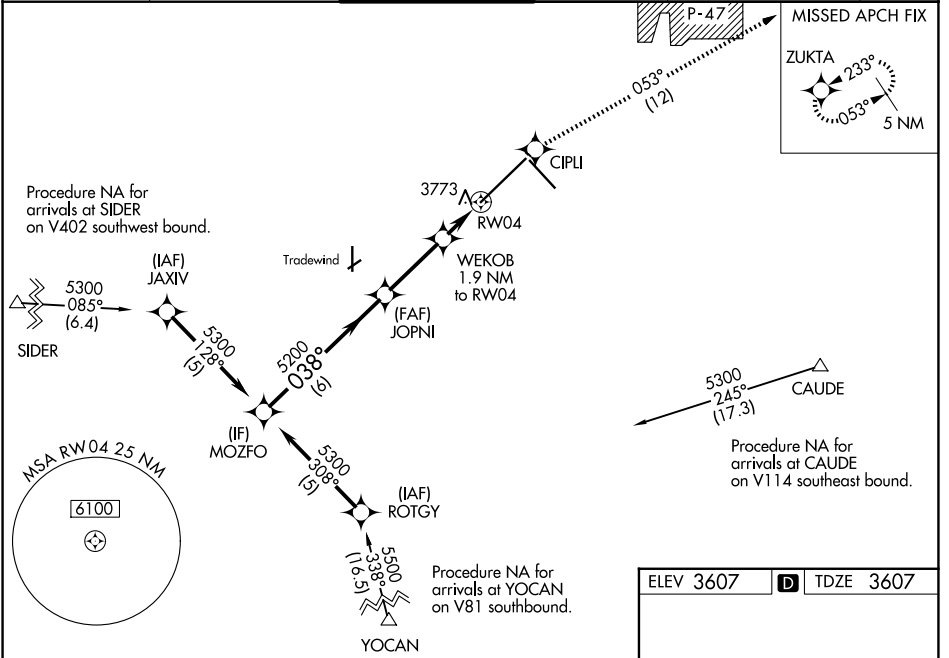
RNP APCH.

ASR
For uncompensated Baro-VNAV systems, LNAV/VNAV NA below -22°C or above 41°C. For inop ALS, increase LPV Cat E visibility to RVR 4000, and LNAV/VNAV and LNAV Cat E to 1¼ SM.
** RVR 1800 authorized with use of FD or AP or HUD to DA.



MISSED APPROACH: Climb to 5400 direct CIPLI and on track 053° to ZUKTA and hold.

ATIS 118.85 350.3	AMARILLO APP CON* 119.5 307.0	AMARILLO TOWER* 118.3 (CTAF) 257.9	GND CON 121.9 348.6	CLNC DEL 121.65 239.275	UNICOM 122.95
-----------------------------	---	--	-------------------------------	-----------------------------------	-------------------------



SC-2, 14 MAY 2026 to 11 JUN 2026

SC-2, 14 MAY 2026 to 11 JUN 2026