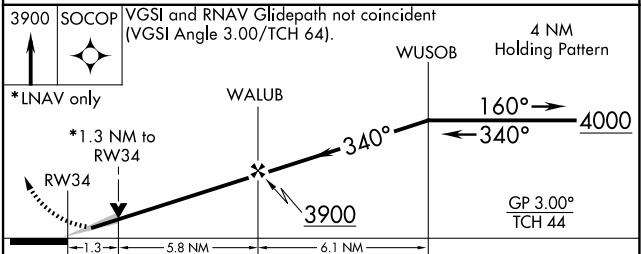
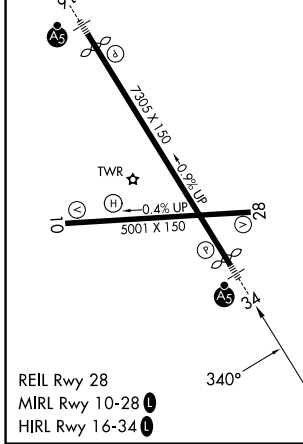
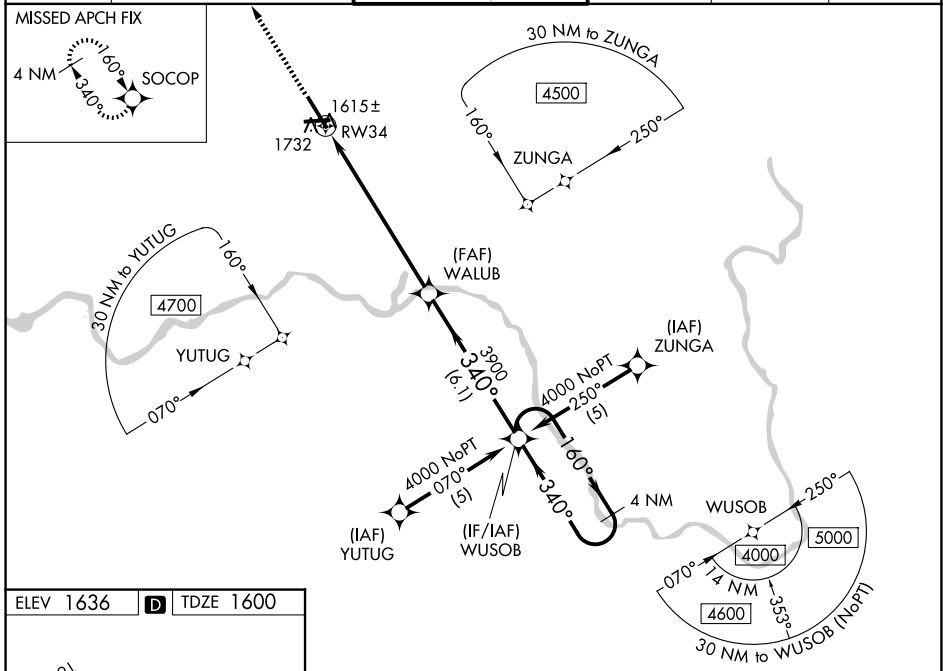


WAAS CH 93915 W34A	APP CRS 340°	Rwy Ldg TDZE Apt Elev	7100 1600 1636
--	------------------------	-----------------------------	---

RNAV (GPS) RWY 34

GREATER BINGHAMTON/EDWIN A LINK FLD (BGM)

RNP APCH.		<p>▼ For uncompensated Baro-VNAV systems, LNAV/VNAV NA below -18°C (0°F) or above 46°C (114°F). When local altimeter setting not received, use Ithaca altimeter setting and increase all DA 138 feet and all MDA 140 feet, increase LPV all Cats, LNAV Cats C and D and Circling Cat C and D visibility ½ SM, and LNAV/VNAV all Cats visibility ½ SM. For inoperative MALSR when using Ithaca altimeter setting increase LPV all Cats visibility to RVR 6000. Baro-VNAV and VDP NA when using Ithaca altimeter setting.</p>		<p>MALSR</p>		<p>MISSED APPROACH: Climb to 3900 direct SOCOP and hold.</p>	
ATIS	BINGHAMTON APP CON *	BINGHAMTON TOWER *	GND CON	CLNC DEL	UNICOM		
128.15	118.6 257.625	119.3 (CTAF) 0 239.25	121.9	125.05	122.95		



CATEGORY	A	B	C	D
LPV DA		1800/24	200 (200-½)	
LNAV/VNAV DA		2082/60	482 (500-1¼)	
LNAV MDA	2040/24	440 (500-½)	2040/40 440 (500-¾)	2040/50 440 (500-1)
CIRCLING	2120-1	484 (500-1)	2120-1½ 484 (500-1½)	2200-2 564 (600-2)

NE-2, 14 MAY 2026 to 11 JUN 2026

NE-2, 14 MAY 2026 to 11 JUN 2026