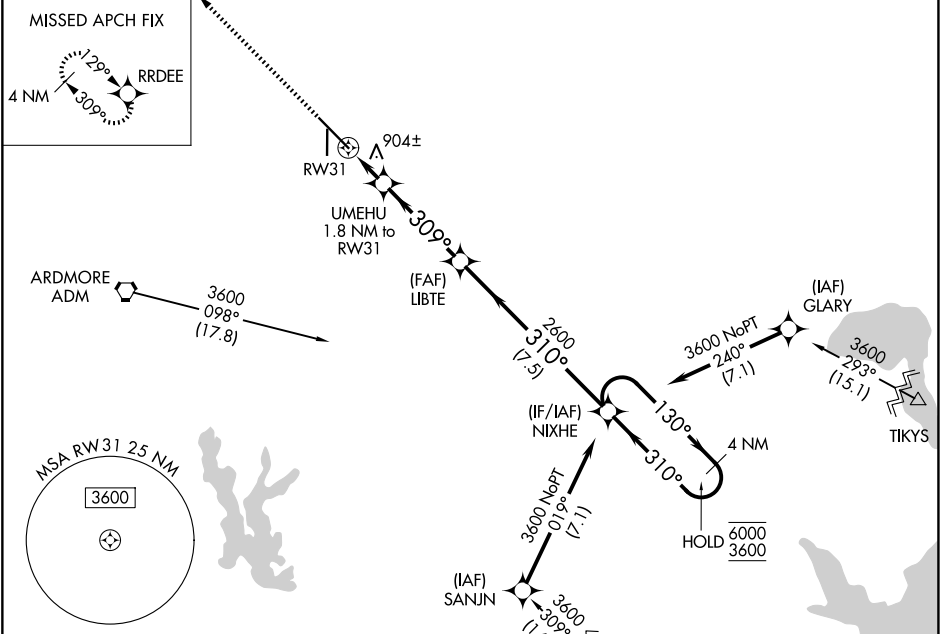


WAAS CH 69625 W31A	APP CRS 309°	Rwy Ldg 9002 TDZE 733 Apt Elev 777
--	------------------------	---

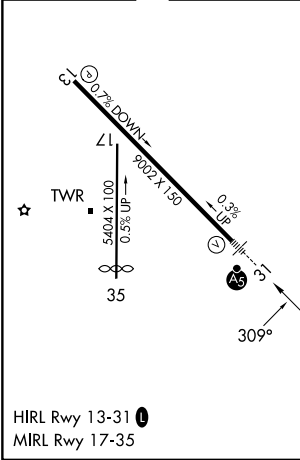
RNAV (GPS) RWY 31

ARDMORE MUNI (ADM)

RNP APCH - GPS.		MALSR		MISSED APPROACH: Climb to 3600 direct RRDEE and hold.	
<p>⚠ For uncompensated Baro-VNAV systems, LNAV/VNAV NA below -16°C or above 54°C. Inop table does not apply to LPV all Cats. For inop ALS, increase LNAV/VNAV all Cats and LNAV Cats C and D visibility to 1 1/8 SM.</p>					
ATIS 125.6	FORT WORTH CENTER 124.75 323.0	ARDMORE TOWER ★ 118.5 (CTAF) 0 257.7	GND CON 121.8	UNICOM 122.95	



ELEV 777	D	TDZE 733
----------	----------	----------



SC-1, 14 MAY 2026 to 11 JUN 2026

SC-1, 14 MAY 2026 to 11 JUN 2026