

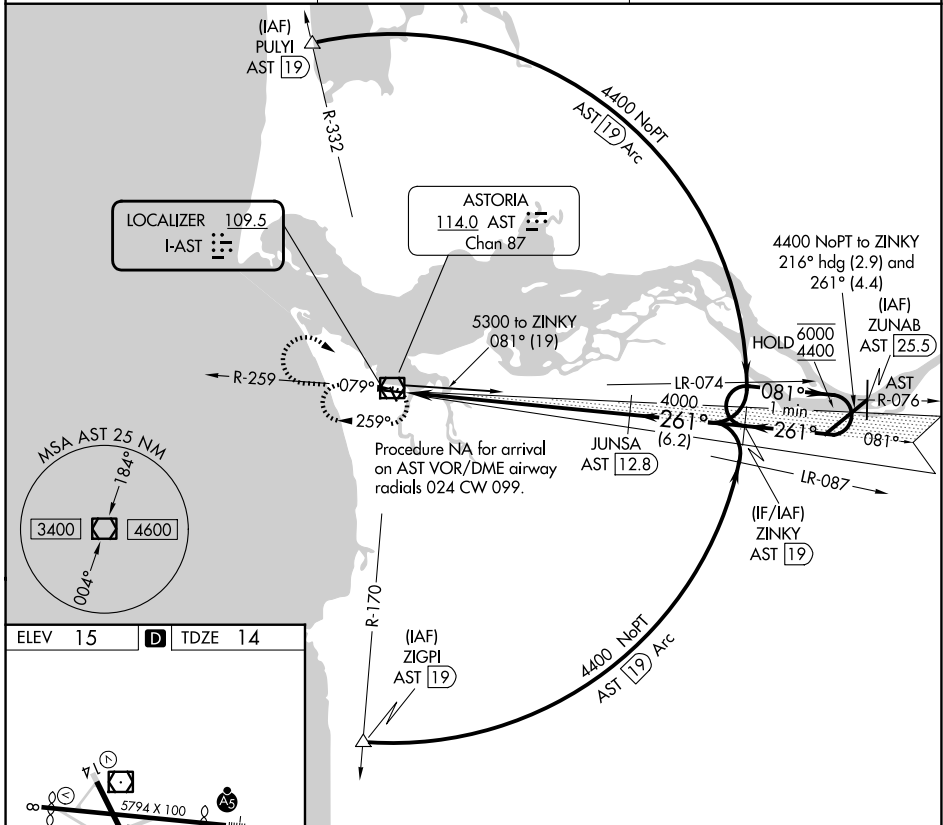
LOC I-AST 109.5	APP CRS 261°	Rwy Ldg 4780
		TDZE 14
		Apt Elev 15

ILS RWY 26

ASTORIA RGNL (AST)

DME required for procedure entry.		MALSR AS	MISSED APPROACH: Climb to 1500 then climbing right turn to 2900 direct AST VOR/DME and hold.
Rwy 26 helicopter visibility reduction below 3/4 SM NA. Inoperative table does not apply.			

ASOS 135.375	SEATTLE CENTER 124.2 317.6	UNICOM 122.8 (CTAF) 0
------------------------	--------------------------------------	---------------------------------



NW-1, 14 MAY 2026 to 11 JUN 2026

NW-1, 14 MAY 2026 to 11 JUN 2026

ELEV 15 **D** TDZE 14

REIL Rwy 8
 REIL Rwy 14
 MIRL Rwy 8-26 and 14-32

1500	2900	AST	ZINKY AST 19		One Minute Holding Pattern
		JUNSA AST 12.8	4000	081° → 6000	← 261° 4400
			4000	GS 3.00° TCH 56	
12.3 NM		6.2 NM			
CATEGORY	A	B	C	D	
S-ILS 26	264-1 250 (300-1)				