

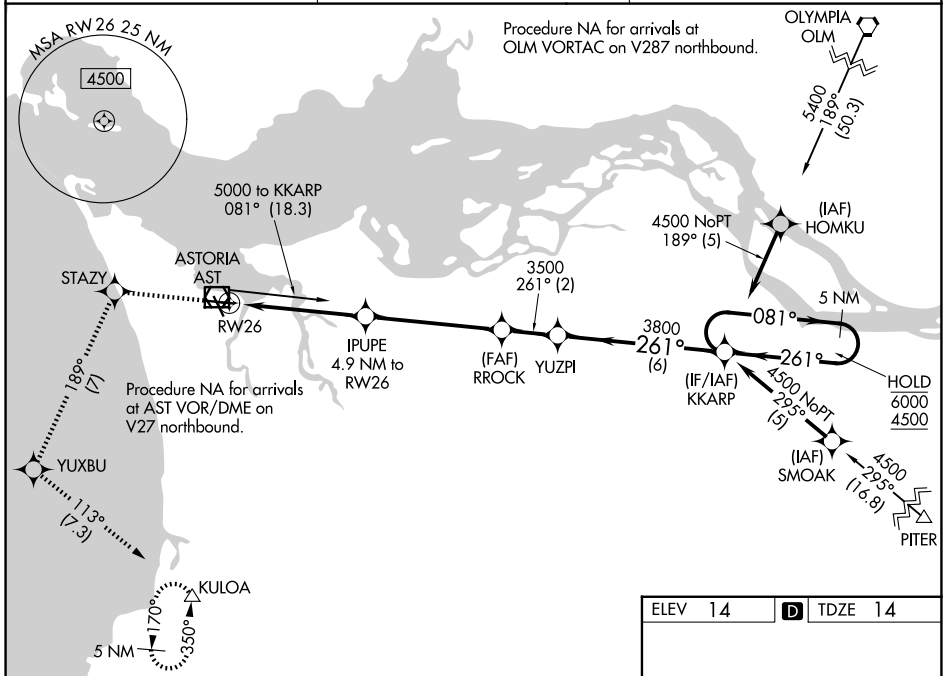
WAAS CH <b>97711</b> <b>W26A</b>	APP CRS <b>261°</b>	Rwy Ldg TDZE <b>14</b> Apt Elev <b>14</b>	<b>4780</b>
--	------------------------	---	-------------

# RNAV (GPS) RWY 26

ASTORIA RGNL (AST)

RNP APCH.	MALSR	MISSED APPROACH: (Do not exceed 210K until STAZY) Climb to 5000 direct STAZY and left turn on track 189° to YUXBU and left turn on track 113° to KULOA and hold, continue climb-in-hold to 5000.
<p><b>⚠</b> Inop table does not apply to LPV all Cats. Rwy 26 helicopter visibility reduction below 3/4 SM NA. For inop ALS, increase LNAV Cat A/B visibility to 1 SM and Cat C/D to 1 1/2 SM.</p>		

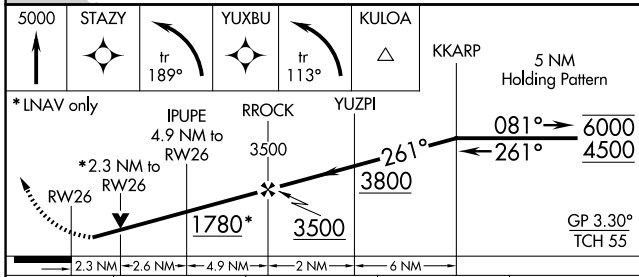
ASOS <b>135.375</b>	SEATTLE CENTER <b>124.2 317.6</b>	UNICOM <b>122.8 (CTAF) 0</b>
------------------------	--------------------------------------	---------------------------------



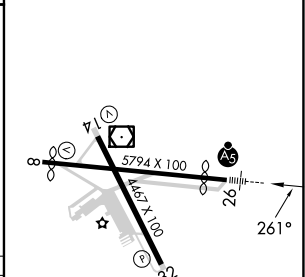
NW-1, 14 MAY 2026 to 11 JUN 2026

NW-1, 14 MAY 2026 to 11 JUN 2026

ELEV 14	<b>D</b> TDZE 14
---------	------------------



CATEGORY	A	B	C	D
LPV DA	264-3/4		250 (300-3/4)	
LNAV MDA	860-3/4	846 (900-3/4)	860-1 7/8	846 (900-1 7/8)
CIRCLING	860-1 1/4	846 (900-1 1/4)	1080-3 1066 (1100-3)	1160-3 1146 (1200-3)



REIL Rwy 8 <b>0</b>
REIL Rwy 14
MIRL Rwy 8-26 and 14-32 <b>0</b>