

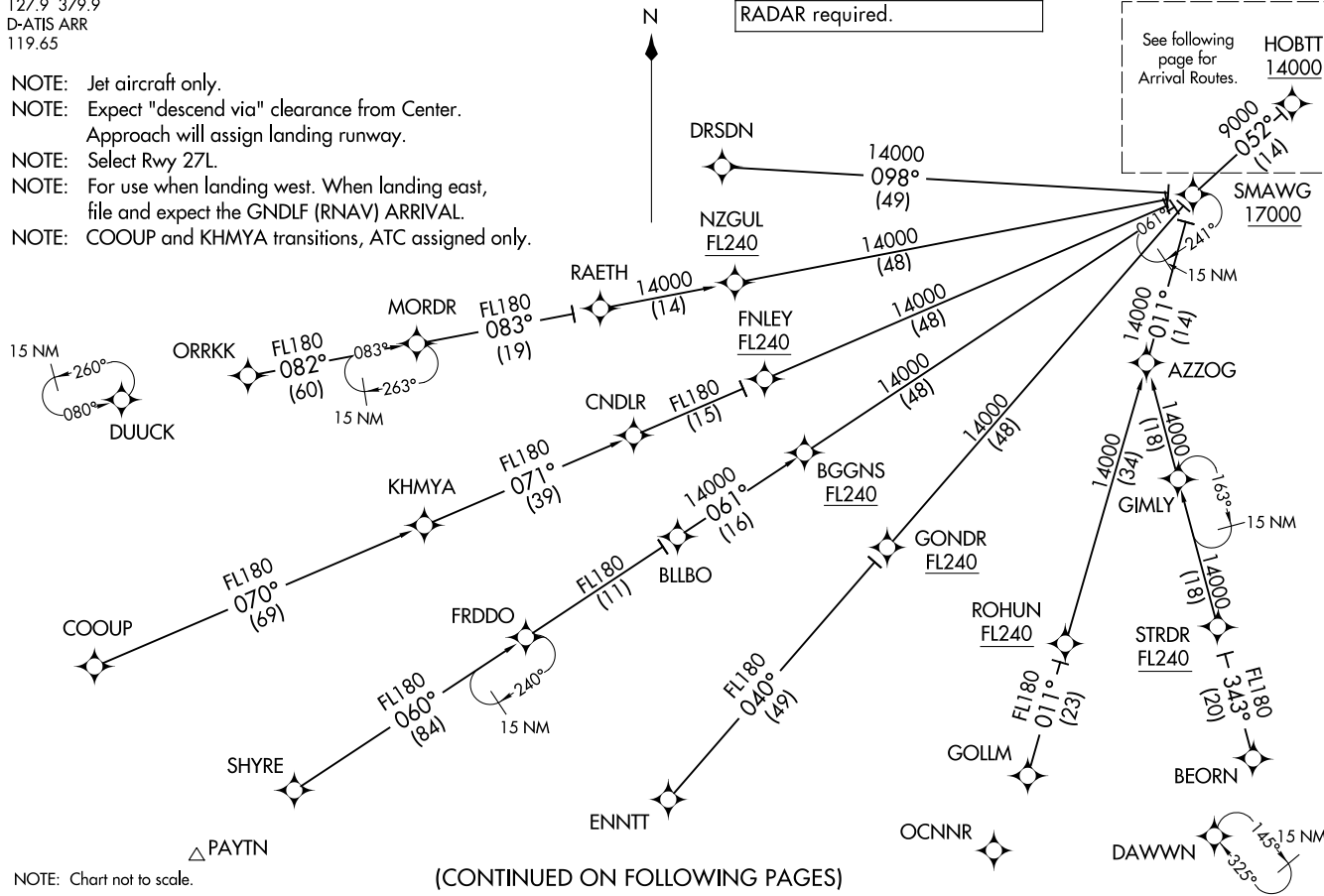
HOBT THREE ARRIVAL (RNAV) Transition Routes  
(HOBT;HOBT3) 27NOV25 ATLANTA, GEORGIA  
HARTSFIELD/JACKSON ATLANTA INTL (ATL)

ATLANTA APP CON  
127.9 379.9  
D-ATIS ARR  
119.65

RNAV 1-DME/DME/IRU or GPS.  
RADAR required.

See following page for Arrival Routes.  
HOBT 14000  
SMAWG 17000

- NOTE: Jet aircraft only.
- NOTE: Expect "descend via" clearance from Center. Approach will assign landing runway.
- NOTE: Select Rwy 27L.
- NOTE: For use when landing west. When landing east, file and expect the GNDLF (RNAV) ARRIVAL.
- NOTE: COOUP and KHYMA transitions, ATC assigned only.



NOTE: Chart not to scale.

(CONTINUED ON FOLLOWING PAGES)

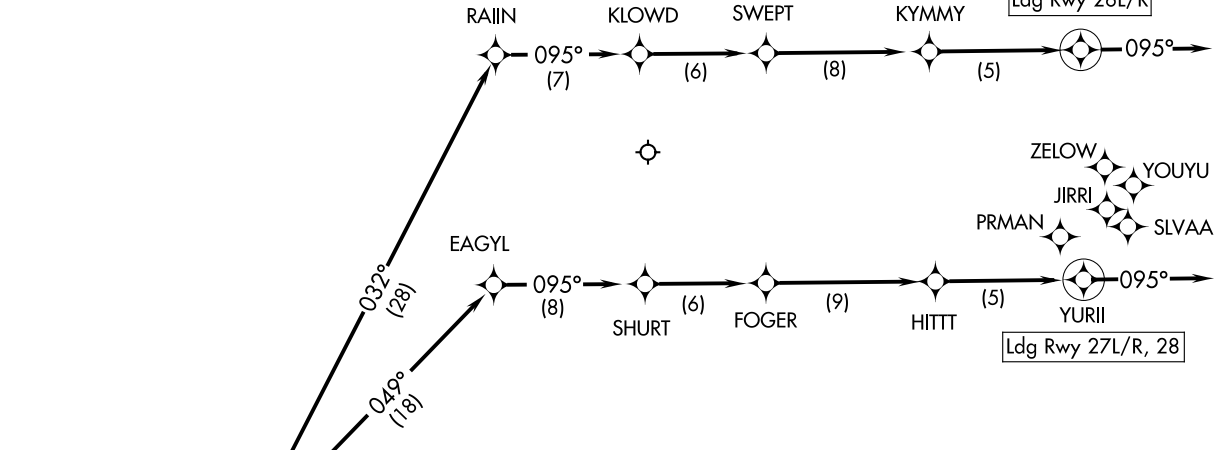
HOBT;HOBT3) 25331 AL-26 (FAA)  
HOBT THREE ARRIVAL (RNAV) Transition Routes  
HARTSFIELD/JACKSON ATLANTA INTL (ATL)  
ATLANTA, GEORGIA

RNAV 1-DME/DME/IRU or GPS.  
RADAR required.

ATLANTA APP CON  
127.9 379.9  
D-ATIS ARR  
119.65

HOBTT THREE ARRIVAL (RNAV) Arrival Routes  
(HOBTT, HOBTT3) 27NOV25  
ATLANTA, GEORGIA  
HARTSFIELD/JACKSON ATLANTA INTL (ATL)

(HOBTT, HOBTT3) 25331  
AL-26 (FAA)  
HARTSFIELD/JACKSON ATLANTA INTL (ATL)  
ATLANTA, GEORGIA



- NOTE: Jet aircraft only.
- NOTE: Expect "descend via" clearance from Center.
- NOTE: Approach will assign landing runway.
- NOTE: Select Rwy 27L.
- NOTE: For use only when landing west. When landing east, file and expect the GNDLF (RNAV) ARRIVAL.
- NOTE: COOUP and KHYA transitions, ATC assigned only.

(CONTINUED ON FOLLOWING PAGE)

NOTE: Chart not to scale.

ARRIVAL ROUTE DESCRIPTION

- BEORN TRANSITION (BEORN.HOBTT3)
- COOUP TRANSITION (COOUP.HOBTT3)
- DRSDN TRANSITION (DRSDN.HOBTT3)
- ENNTT TRANSITION (ENNTT.HOBTT3)
- FRDDO TRANSITION (FRDDO.HOBTT3)
- GOLLM TRANSITION (GOLLM.HOBTT3)
- KHMYA TRANSITION (KHMYA.HOBTT3)
- ORRKK TRANSITION (ORRKK.HOBTT3)
- SHYRE TRANSITION (SHYRE.HOBTT3)
- STRDR TRANSITION (STRDR.HOBTT3)

From HOBTT on track 053° to cross ENSLL at 12000.

LANDING RUNWAYS 26L/R: From ENSLL on track 032° to RAIIN, then on track 095° to KLOWD, then on track 095° to SWEPT, then on track 095° to KYMMY, then on track 095° to KEAVY, then on track 095°. Expect RADAR vectors to final approach course.

LANDING RUNWAYS 27L/R, 28: From ENSLL on track 049° to EAGYL, then on track 095° to SHURT, then on track 095° to FOGER, then on track 095° to HITT, then on track 095° to YURII, then on track 095°. Expect RADAR vectors to final approach course.

LOST COMMUNICATIONS:

ASSIGNED RUNWAY 28 OR RUNWAY NOT ASSIGNED: Cross HOBTT at or above 14000; cross ENSLL at 12000; cross EAGYL at 12000; cross FOGER at or above 7000; cross YURII at 4000; after YURII turn left direct PRMAN and proceed on the ILS or RNAV RWY 28 approach.

ASSIGNED RUNWAY 27L: Cross HOBTT at or above 14000; cross ENSLL at 12000; cross EAGYL at 12000; cross FOGER at or above 7000; cross YURII at 4000; after YURII turn left direct SLVAA and proceed on the ILS or RNAV RWY 27L approach.

ASSIGNED RUNWAY 27R: Cross HOBTT at or above 14000; cross ENSLL at 12000; cross EAGYL at 12000; cross FOGER at or above 7000; cross YURII at 4000; after YURII turn left direct YOUYU and proceed on the ILS or RNAV RWY 27R approach.

ASSIGNED RUNWAY 26L: Cross HOBTT at or above 14000; cross ENSLL at 12000; cross RAIIN at 12000; cross SWEPT at or above 7000; cross KEAVY at 5000; after KEAVY turn right direct JIRRI and proceed on the ILS or RNAV RWY 26L approach.

ASSIGNED RUNWAY 26R: Cross HOBTT at or above 14000; cross ENSLL at 12000; cross RAIIN at 12000; cross SWEPT at or above 7000; cross KEAVY at 5000; after KEAVY turn right direct ZELow and proceed on the ILS or RNAV RWY 26R approach.