

LOC/DME I-GXZ <b>110.1</b> Chan <b>38</b>	APP CRS <b>275°</b>	Rwy Ldg TDZE Apt Elev	<b>8500</b> <b>990</b> <b>1026</b>
---	------------------------	-----------------------------	--

# ILS RWY 26R (SA CAT I & II)

HARTSFIELD/JACKSON ATLANTA INTL (ATL)

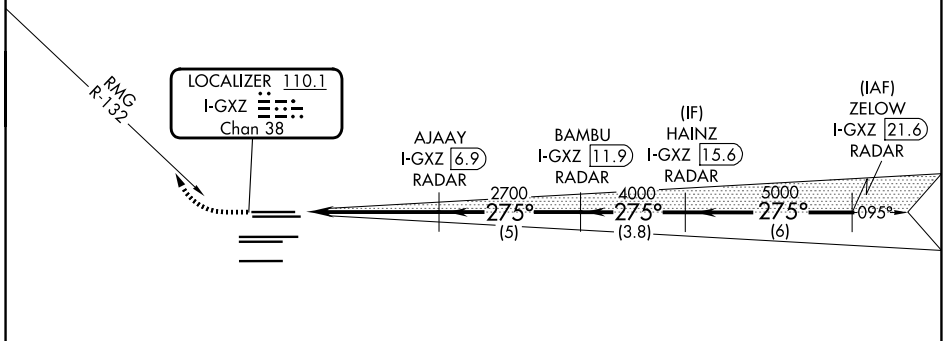
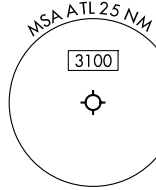
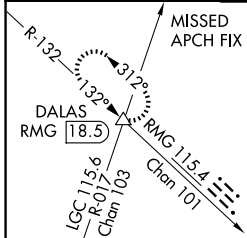
**RADAR required.**

SA CAT I/II: Requires specific OPSPEC, MSPEC, or LOA approval. Simultaneous approach authorized.

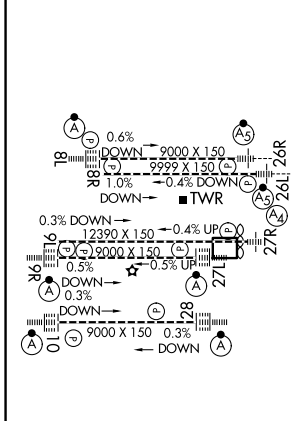


**MISSED APPROACH:** Climb to 1800 then climbing right turn to 4000 on RMG VORTAC R-132 to DALAS INT/RMG 18.5 DME and hold.

D-ATIS <b>119.65</b>	ATLANTA APP CON <b>127.9 379.9</b>	ATLANTA TOWER				ALL RWYS	GND CON	ALL RWYS
		8L-26R	8R-26L	9L-27R	9R-27L	10-28	(8L-26R, 8R-26L) (9L-27R, 9R-27L)	10-28
		<b>119.1</b>	<b>125.325</b>	<b>123.85</b>	<b>119.3</b>	<b>119.5</b>	<b>121.9</b>	<b>121.75</b> <b>121.65</b> <b>254.4</b>



ELEV 1026	<b>D</b>	TDZE 990
-----------	----------	----------



1800	4000	DALAS	VGSI and ILS glidepath not coincident (VGSI Angle 3.00/TCH 69).			
	RMG R-132		AJAAY I-GXZ [6.9] RADAR	BAMBU I-GXZ [11.9] RADAR	HAINZ I-GXZ [15.6] RADAR	ZELOW I-GXZ [21.6] RADAR
			2700	4000	5000	5000
			275°	275°	275°	095°
			(5)	(3.8)	(6)	
			GS 3.00°			TCH 55
			5.2 NM	5 NM	3.8 NM	6 NM
CATEGORY	A	B	C	D		
S-ILS 26R	SA CAT I RA 170/14		150 DA 1140			
S-ILS 26R	SA CAT II RA 110/12		100 DA 1090			

HIRL all Rwys  
TDZL/RCLS Rwys 8L,  
9R, 10, 26R, 27L and 28

## SA CATEGORY I & II ILS - SPECIAL AIRCREW & AIRCRAFT CERTIFICATION REQUIRED

SE-4, 14 MAY 2026 to 11 JUN 2026

SE-4, 14 MAY 2026 to 11 JUN 2026