

ATLANTA, GEORGIA

AL-26 (FAA)

26078

LOC/DME I-FSQ <b>108.5</b> Chan <b>22</b>	APP CRS <b>275°</b>	Rwy Ldg TDZE Apt Elev	<b>8865</b> <b>999</b> <b>1026</b>
---	------------------------	-----------------------------	--

# ILS RWY 27L (CAT II)

HARTSFIELD/JACKSON ATLANTA INTL (ATL)

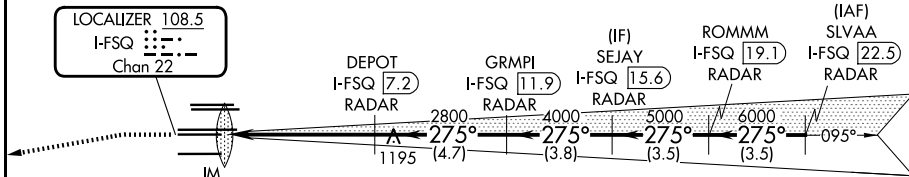
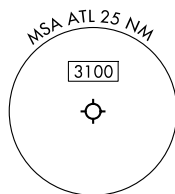
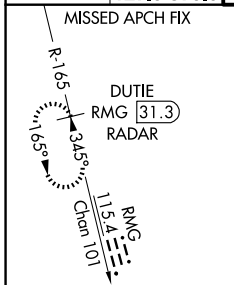
DME or RADAR required.  
RADAR required for procedure entry.

Simultaneous approach authorized.

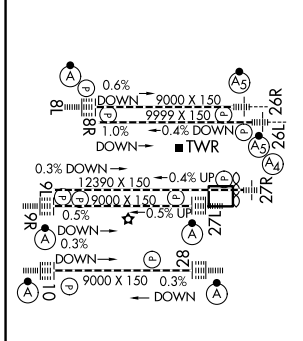
ALS-F-2

MISSED APPROACH: Climb to 1500 then climbing left turn to 4000 on heading 265° and RMG VORTAC R-165 to DUTIE/RMG 31.3 DME/RADAR and hold.

D-ATIS <b>119.65</b>	ATLANTA APP CON <b>127.9 379.9</b>	ATLANTA TOWER 8L-26R 8R-26L 9L-27R 9R-27L 10-28 RWYS	ALL RWYS <b>119.1 125.325 123.85 119.3 119.5 254.4</b>	GND CON 8L-26R, 8R-26L 9L-27R, 9R-27L 10-28 RWYS	ALL RWYS <b>121.9 121.75 121.65 254.4</b>
-------------------------	---------------------------------------	---	---	---	--



ELEV 1026	<b>D</b>	TDZE 999
-----------	----------	----------



HIRL all Rwys  
TDZL/RCLS Rwys 8L, 9R, 10, 26R, 27L and 28

1500	4000	RMG R-165	DUTIE RMG 31.3	VGSI and ILS glidepath not coincident (VGSI Angle 3.00/TCH 79)	SLVAA ROMMM I-FSQ 22.5 RADAR
hdg 265°					
IM 2800	2800	DEPOT I-FSQ 7.2 RADAR	GRMPI I-FSQ 11.9 RADAR	SEJAY I-FSQ 19.1 RADAR	
4000	5000				
6000	7000				
GS 3.00° TCH 58					
5.5 NM	4.7 NM	3.8 NM	3.5 NM	3.5 NM	
CATEGORY A	B	C	D		
S-ILS 27L	RA 127/12	100 DA 1099			

**CATEGORY II ILS- SPECIAL AIRCREW & AIRCRAFT CERTIFICATION REQUIRED**

ATLANTA, GEORGIA  
Amdt 19 22APR21

HARTSFIELD/JACKSON ATLANTA INTL (ATL)  
33°38'N-84°26'W

**ILS RWY 27L (CAT II)**

SE-4, 14 MAY 2026 to 11 JUN 2026

SE-4, 14 MAY 2026 to 11 JUN 2026