

ATLANTA, GEORGIA

AL-26 (FAA)

26078

LOC/DME I-FSQ 108.5 Chan 22	APP CRS 275°	Rwy Ldg TDZE Apt Elev	8865 999 1026
---	------------------------	-----------------------------	--

ILS RWY 27L (SA CAT I)

HARTSFIELD/JACKSON ATLANTA INTL (ATL)

DME or RADAR required.
RADAR required for procedure entry.

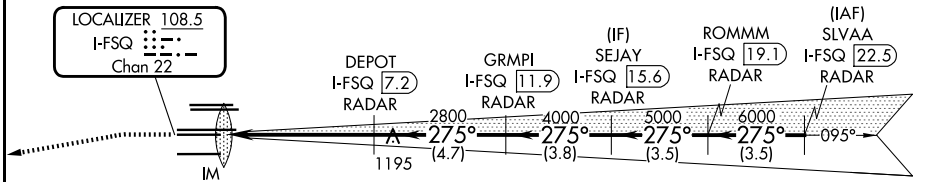
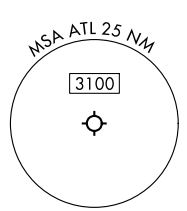
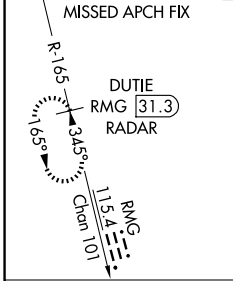
Simultaneous approach authorized.
Requires specific OPSPEC, MSPEC, or LOA approval.

ALSF-2

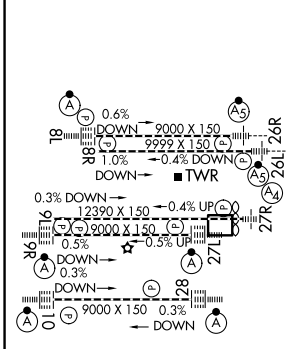


MISSED APPROACH: Climb to 1500 then climbing left turn to 4000 on heading 265° and RMG VORTAC R-165 to DUTIE/RMG 31.3 DME/RADAR and hold.

D-ATIS 119.65	ATLANTA APP CON 127.9 379.9	ATLANTA TOWER					ALL RWYS	GND CON	ALL RWYS
		8L-26R	8R-26L	9L-27R	9R-27L	10-28	(8L-26R, 8R-26L)	(9L-27R, 9R-27L)	10-28
		119.1	125.325	123.85	119.3	119.5 254.4	121.9	121.75	121.65 254.4



ELEV 1026	D	TDZE 999
-----------	----------	----------



1500	4000	RMG R-165	DUTIE RMG 31.3	VGSI and ILS glidepath not coincident (VGSI Angle 3.00/TCH 79)	SLVAA I-FSQ 22.5
hdg 265°					ROMMM I-FSQ 19.1
			DEPOT I-FSQ 7.2	SEJAY I-FSQ 15.6	
			GRMPI I-FSQ 11.9	RADAR	
			IM	2800	7000
			2800	4000	5000
				6000	
					GS 3.00° TCH 58
			11076'	5.5 NM	4.7 NM
				3.8 NM	3.5 NM
					3.5 NM
			CATEGORY A	B	C
			S-ILS 27L	RA 214/14	150 DA 1149

SA CATEGORY I ILS- SPECIAL AIRCREW & AIRCRAFT CERTIFICATION REQUIRED

ATLANTA, GEORGIA
Amdt 19 22APR21

HARTSFIELD/JACKSON ATLANTA INTL (ATL)
33°38'N-84°26'W

ILS RWY 27L (SA CAT I)

SE-4, 14 MAY 2026 to 11 JUN 2026

SE-4, 14 MAY 2026 to 11 JUN 2026