

LOC/DME I-PKU <b>111.75</b> Chan <b>54(Y)</b>	APP CRS <b>275°</b>	Rwy Ldg TDZE Apt Elev <b>9000</b> <b>998</b> <b>1026</b>
---	------------------------	---

# ILS RWY 28 (CAT II)

## HARTSFIELD/JACKSON ATLANTA INTL (ATL)

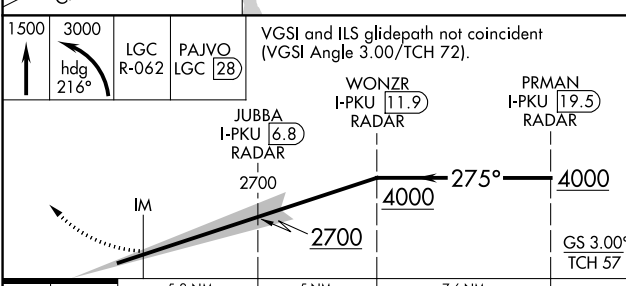
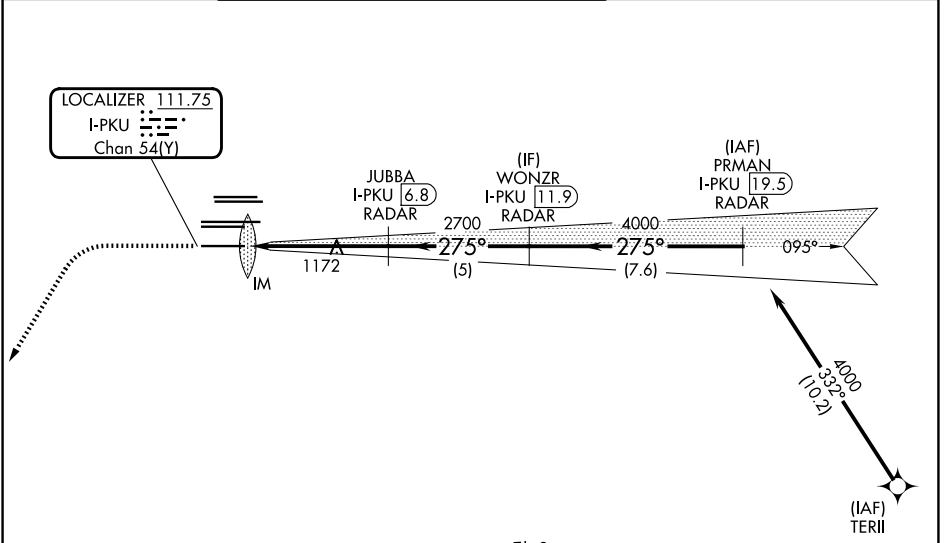
RNAV 1-GPS or RADAR required for procedure entry.  
From TERII: RNAV 1-GPS required. DME or RADAR required.

ALSF-2

MISSED APPROACH: Climb to 1500 then climbing left turn to 3000 on heading 216° and LGC VORTAC R-062 to PAJVO/LGC 28 DME/RADAR and hold.

Simultaneous approach authorized.

D-ATIS <b>119.65</b>	ATLANTA APP CON <b>127.9 379.9</b>	ATLANTA TOWER					ALL RWYS	GND CON	ALL RWYS		
		8L-26R	8R-26L	9L-27R	9R-27L	10-28	(8L-26R,8R-26L)	(9L-27R,9R-27L)	10-28		
		<b>119.1</b>	<b>125.325</b>	<b>123.85</b>	<b>119.3</b>	<b>119.5</b>	<b>254.4</b>	<b>121.9</b>	<b>121.75</b>	<b>121.65</b>	<b>254.4</b>



CATEGORY	A	B	C	D
S-ILS 28	RA 188/12		100 DA 1098	

**CATEGORY II ILS - SPECIAL AIRCREW & AIRCRAFT CERTIFICATION REQUIRED**

ELEV 1026 | TDZE 998

HILL all Rwys TDZL/RCLS Rwy 8L, 9R, 10, 26R, 27L and 28

SE-4, 14 MAY 2026 to 11 JUN 2026

SE-4, 14 MAY 2026 to 11 JUN 2026