

LOC/DME I-HFW 109.3 Chan 30	APP CRS 095°	Rwy Ldg 8800 TDZE 1015 Apt Elev 1026
---	------------------------	---

ILS RWY 8L (SA CAT I)

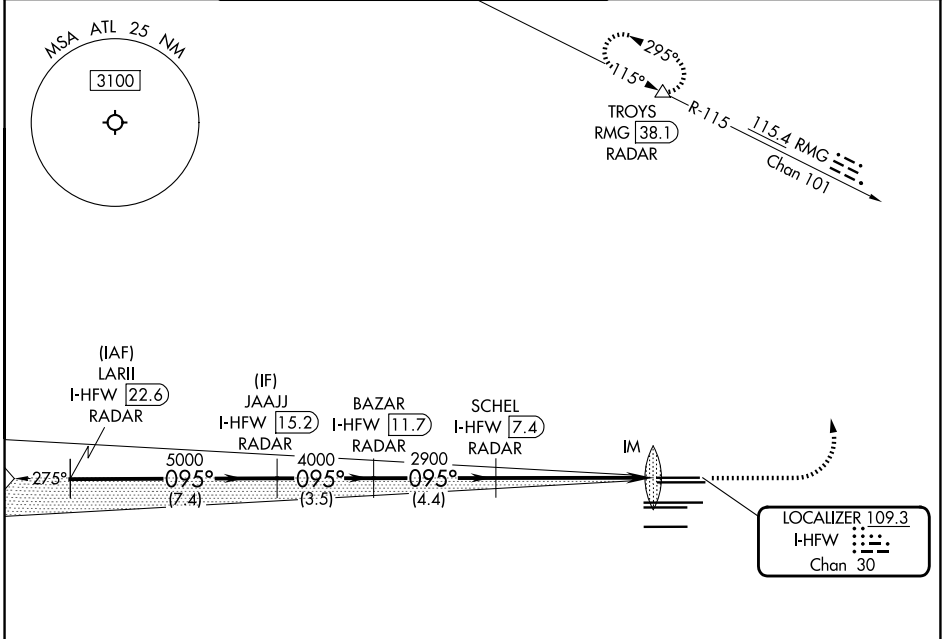
HARTSFIELD/JACKSON ATLANTA INTL (ATL)

RADAR required for procedure entry. DME or RADAR required. ALSF-2

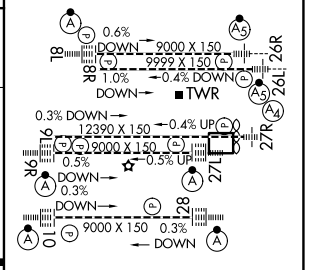
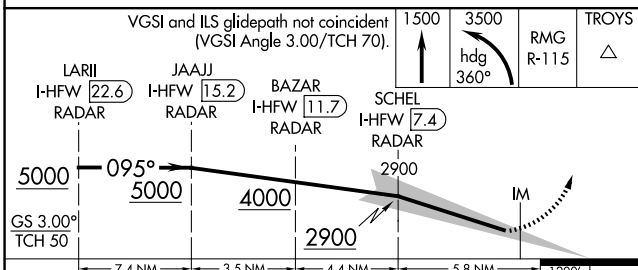
MISSED APPROACH: Climb to 1500 then climbing left turn to 3500 on heading 360° and RMG VORTAC R-115 to TROYS/RMG 38.1 DME/RADAR and hold.

Simultaneous approach authorized. Requires specific OPSPEC, MSPEC, or LOA approval.

D-ATIS 119.65	ATLANTA APP CON 127.9 379.9	ATLANTA TOWER 8L-26R 8R-26L 9L-27R 9R-27L 10-28 RWYs 119.1 125.325 123.85 119.3 119.5 254.4	ALL RWYs 121.9	GND CON (8L-26R,8R-26L) (9L-27R,9R-27L) 10-28 RWYs 121.75 121.65 254.4
-------------------------	---------------------------------------	--	--------------------------	---



ELEV 1026	TDZE 1015
-----------	-----------



CATEGORY	A	B	C	D
S-ILS 8L	RA 147/14 150 DA 1165			

SA CATEGORY I ILS - SPECIAL AIRCREW & AIRCRAFT CERTIFICATION REQUIRED

HIRL all Rwy
TDZL/RCLS Rwy 8L,
9R, 10, 26R, 27L and 28

SE-4, 14 MAY 2026 to 11 JUN 2026

SE-4, 14 MAY 2026 to 11 JUN 2026