

LOC/DME I-FUN 108.9 Chan 26	APP CRS 095°	Rwy Ldg TDZE 1026 Apt Elev 1026
---	------------------------	---

ILS RWY 9R (CAT II & III)

HARTSFIELD/JACKSON ATLANTA INTL (ATL)

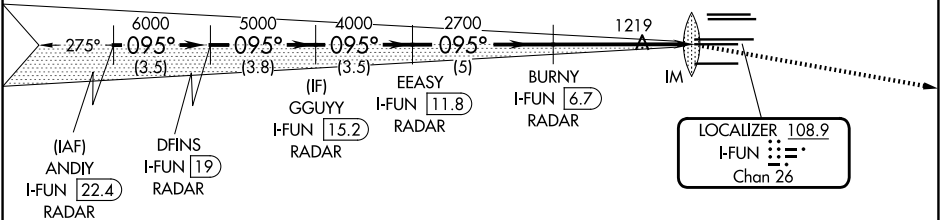
RADAR required for procedure entry, DME.

Simultaneous approach authorized.

ALSF-2

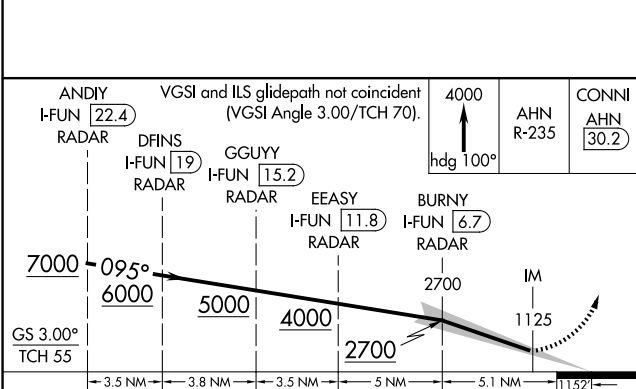
MISSED APPROACH: Climb to 4000 on heading 100° and AHN VOR/DME R-235 to CONNI/AHN 30.2 DME and hold.

D-ATIS 119.65	ATLANTA APP CON 127.9 379.9	ATLANTA TOWER 8L-26R 8R-26L 9L-27R 9R-27L 10-28 RWYS 119.1 125.325 123.85 119.3 119.5 254.4	ALL RWYS 121.9	GND CON 121.75 121.65 254.4	ALL RWYS
-------------------------	---------------------------------------	--	--------------------------	---------------------------------------	----------



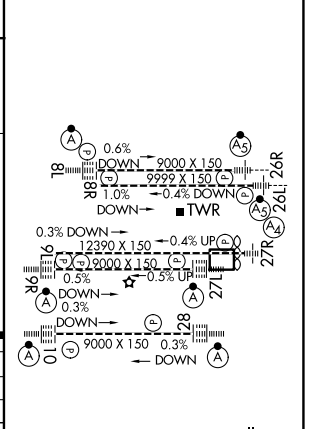
SE-4, 14 MAY 2026 to 11 JUN 2026

LOCALIZER 108.9 I-FUN Chan 26



ELEV 1026	TDZE 1026
-----------	-----------

CATEGORY	A	B	C	D
S-ILS 9R	CAT II RA 118/12 100 DA 1126			
S-ILS 9R	CAT III RVR 03			



CATEGORY II & III ILS - SPECIAL AIRCREW & AIRCRAFT CERTIFICATION REQUIRED

HIRL all Rwys
TDZL/RCLS Rwys 8L, 9R, 10, 26R, 27L and 28

SE-4, 14 MAY 2026 to 11 JUN 2026