

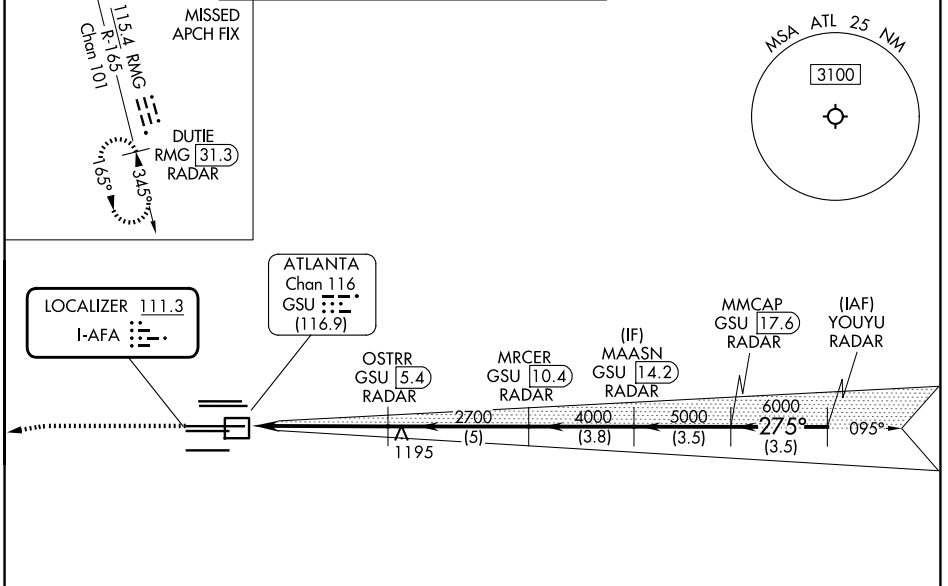
LOC I-AFA 111.3	APP CRS 275°	Rwy Ldg 27R 11890 27L 8865 TDZE 985 999 Apt Elev 1026 1026
---------------------------	------------------------	--

ILS or LOC RWY 27R

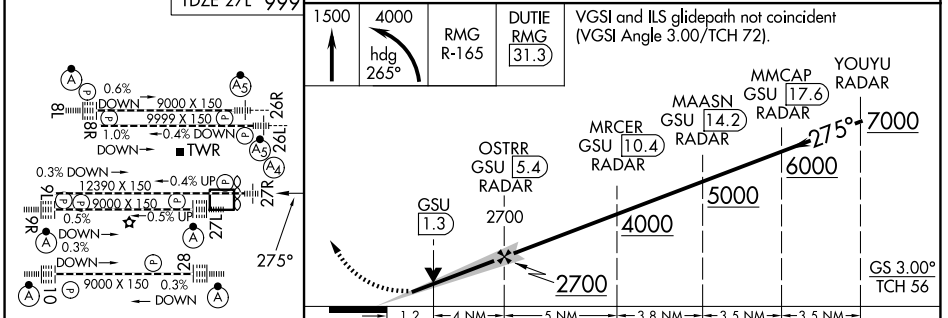
HARTSFIELD/JACKSON ATLANTA INTL (ATL)

DME and RADAR required.		Rwy 27R MALS 	Rwy 27L ALSF-2 	MISSED APPROACH: Climb to 1500 then climbing left turn to 4000 on heading 265° and RMG VORTAC R-165 to DUTIE/RMG 31.3 DME/RADAR and hold.
<p>▽ Simultaneous approach authorized. Inop table does not apply to S-ILS 27R all Cats. DME from GSU DME. DME use requires simultaneous reception of I-AFA and GSU DME.</p>		(A)	(A)	

D-ATIS 119.65	ATLANTA APP CON 127.9 379.9	ATLANTA TOWER 8L-26R 119.1 8R-26L 125.325 9L-27R 123.85 9R-27L 119.3 10-28 RWYS 119.5 254.4				ALL RWYS 121.9	GND CON 8L-26R,8R-26L) (9L-27R,9R-27L) 10-28 RWYS 121.75	ALL RWYS 121.65 254.4
-------------------------	---------------------------------------	---	--	--	--	--------------------------	---	---------------------------------



ELEV 1026	D	TDZE 27R 985 TDZE 27L 999
-----------	----------	------------------------------



	1.2	4 NM	5 NM	3.8 NM	3.5 NM	3.5 NM	
CATEGORY	A	B	C	D			
S-ILS 27R	1185/40		200 (200-¾)				
S-LOC 27R	1420/40	435 (400-¾)	1420/50	435 (400-1)			
SIDESTEP 27L	1420/55		421 (400-1)		1420-1½ 421 (400-1½)		

SE-4, 14 MAY 2026 to 11 JUN 2026

SE-4, 14 MAY 2026 to 11 JUN 2026