

LOC/DME I-ATL 109.9 Chan 36	APP CRS 095°	Rwy Ldg 8R 9999 8800 8L 1024 1015 Apt Elev 1026 1026
---	------------------------	--

ILS or LOC RWY 8R

HARTSFIELD/JACKSON ATLANTA INTL (ATL)

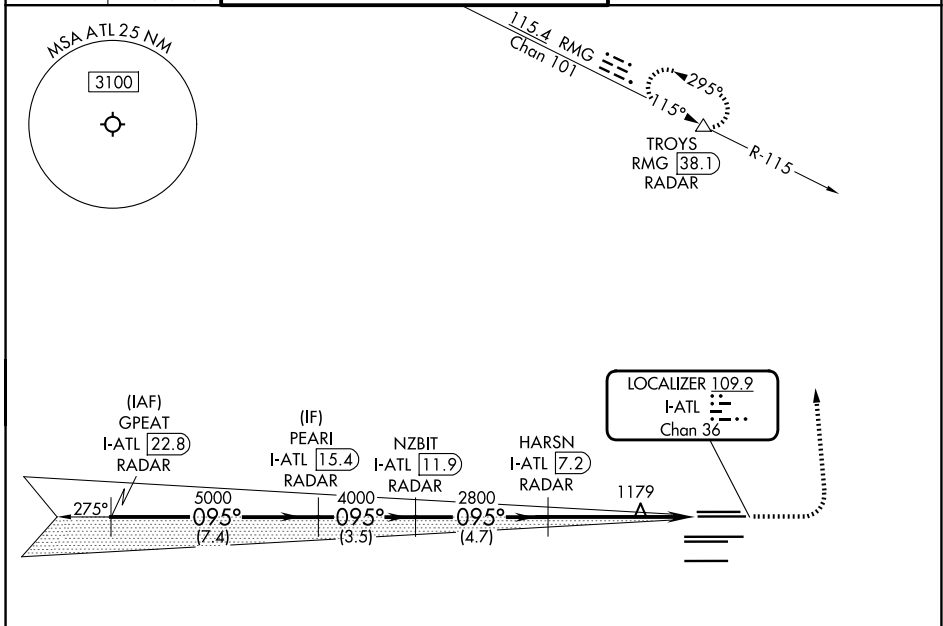
RADAR required for procedure entry.
DME or RADAR required.

Simultaneous approach authorized. Sidestep 8L for inop ALSF-2, increase Cat E visibility to 2.

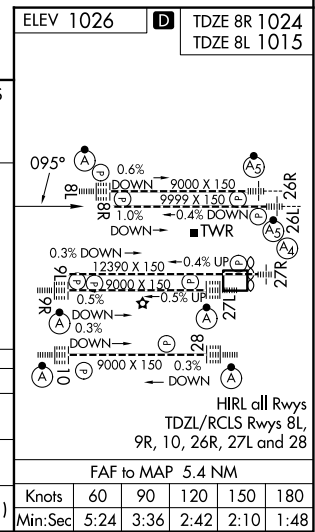
Rwy 8L ALSF-2

MISSED APPROACH: Climb to 1500 then climbing left turn to 3500 on heading 360° and RMG VORTAC R-115 to TROYS/RMG 38.1 DME/RADAR and hold.

D-ATIS 119.65	ATLANTA APP CON 127.9 379.9	ATLANTA TOWER 8L-26R 119.1 8R-26L 125.325 9L-27R 123.85 9R-27L 119.3 10-28 RWYS 119.5 254.4	ALL RWYS 121.9	GND CON 9L-27R, 9R-27L 121.75	ALL RWYS 10-28 121.65 254.4
-------------------------	---------------------------------------	---	--------------------------	---	---------------------------------------



VGSi and ILS glidepath not coincident (VGSi Angle 3.00/TCH 67).		1500	3500	TROYS
		↑	hdg 360°	△
GPEAT I-ATL 22.8 RADAR	PEARI I-ATL 15.4 RADAR	NZBIT I-ATL 11.9 RADAR	HARSN I-ATL 7.2 RADAR	I-ATL 2.9
5000		4000	2800	1179
GS 3.00° TCH 53				
7.4 NM		3.5 NM	4.7 NM	4.3 NM
CATEGORY	A	B	C	D
S-ILS 8R	1282/40		258 (300-¾)	
S-LOC 8R	1440/55	416 (500-1)	1440/60	416 (500-1½)
SIDESTEP 8L	1440/55	425 (500-1)	1440/60	425 (500-1½)



SE-4, 14 MAY 2026 to 11 JUN 2026

SE-4, 14 MAY 2026 to 11 JUN 2026