

ATLANTA, GEORGIA

AL-26 (FAA)

26078
ILS PRM RWY 28 (SA CAT I)

(CLOSE PARALLEL)

HARTSFIELD/JACKSON ATLANTA INTL (ATL)

LOC/DME I-PKU 111.75 Chan 54 (Y)	APP CRS 275°	Rwy Ldg TDZE Apt Elev 9000 998 1026
--	------------------------	---

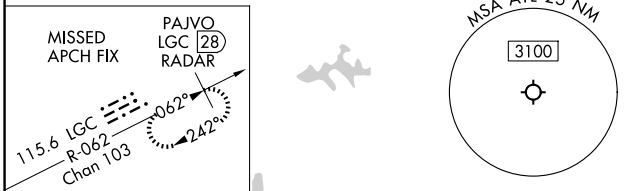
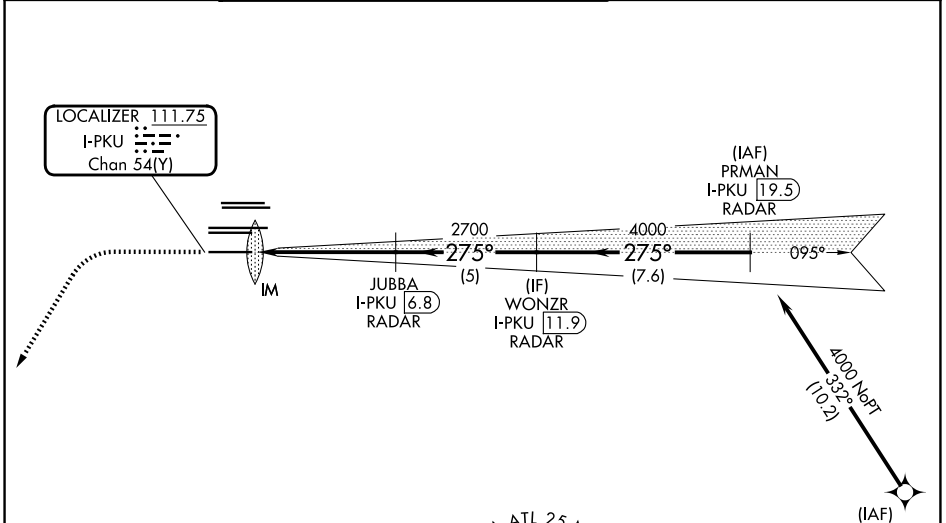
RNAV 1-GPS or RADAR required for procedure entry.
From TERII: RNAV 1-GPS required. DME or RADAR required.

ALSF-2

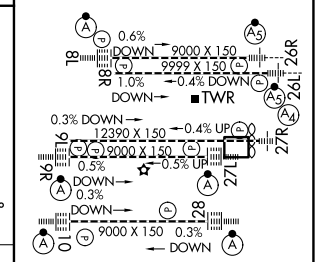
MISSED APPROACH: Climb to 1500 then climbing left turn to 3000 on heading 216° and LGC VORTAC R-062 to PAJVO/LGC 28 DME/RADAR and hold.

Simultaneous approach authorized. Use of FD or AP required during simultaneous operations. Dual VHF comm required. See additional requirements on AAUP. Requires specific OPSPEC, MSPEC, or LOA approval.

D-ATIS 119.65	ATLANTA APP CON 127.9 379.9	ATLANTA TOWER 8L-26R 8R-26L 9L-27R 9R-27L 10-28 RWYS 119.1 125.325 123.85 119.3 119.5 254.4 PRM 133.425	ALL RWYS (8L-26R,8R-26L) (9L-27R,9R-27L) 10-28 121.9 121.75 121.65 254.4
-------------------------	---------------------------------------	--	---



ELEV 1026	TDZE 998
MISSED APCH FIX	PAJVO LGC 28 RADAR
1500	3000
hdg 216°	LGC R-062
JUBBA I-PKU 6.8 RADAR	PAJVO LGC 28
WONZR I-PKU 11.9 RADAR	PRMAN I-PKU 19.5 RADAR
IM	GS 3.00°
1100'	TCH 57
5.2 NM	5 NM
7.6 NM	



SA CATEGORY I ILS - SPECIAL AIRCREW & AIRCRAFT CERTIFICATION REQUIRED

HIRT all Rwys
TDZL/RCLS Rwys 8L, 9R, 10, 26R, 27L and 28

ATLANTA, GEORGIA
Amdt 5 07OCT121

33°38'N-84°26'W

HARTSFIELD/JACKSON ATLANTA INTL (ATL)

ILS PRM RWY 28 (SA CAT I) (CLOSE PARALLEL)

SE-4, 14 MAY 2026 to 11 JUN 2026

SE-4, 14 MAY 2026 to 11 JUN 2026