

WAAS CH 65700 W27A	APP CRS 275°	Rwy Ldg 8865 TDZE 999 Apt Elev 1026
--	------------------------	--

RNAV (GPS) RWY 27L

HARTSFIELD/JACKSON ATLANTA INTL (ATL)

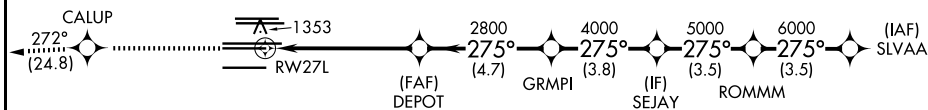
▼ For uncompensated Baro-VNAV systems, LNAV/VNAV NA below -7°C (20°F) or above 54°C (130°F). DME/DME RNP-0.3 NA. Simultaneous approach authorized with Rwy 26R or 26L. LNAV procedure NA during simultaneous operations. Use of FD or AP providing RNAV track guidance required during simultaneous operations.

ALSF-2

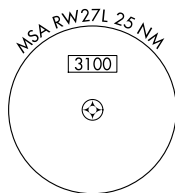
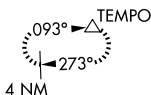


MISSED APPROACH: Climb to 4000 direct CALUP and on track 272° to TEMPO and hold.

D-ATIS 119.65	ATLANTA APP CON 127.9 379.9	ATLANTA TOWER					ALL RWYS	GND CON	ALL RWYS
		8L-26R	8R-26L	9L-27R	9R-27L	10-28	(8L-26R,8R-26L)	(9L-27R,9R-27L)	10-28
		119.1	125.325	123.85	119.3	119.5	121.9	121.75	121.65
						254.4			254.4

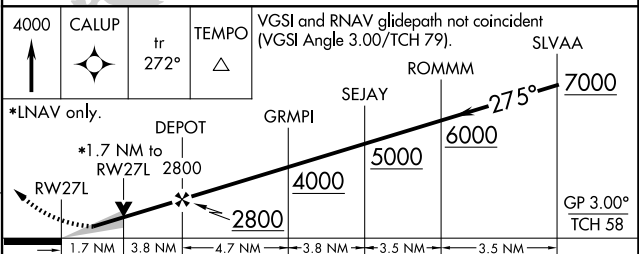
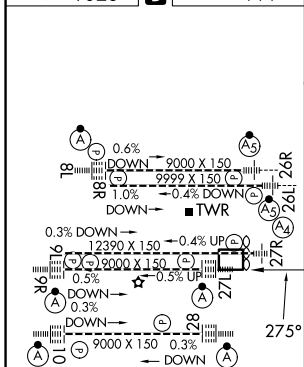


MISSED APCH FIX



RADAR REQUIRED

ELEV 1026	D	TDZE 999
-----------	----------	----------



CATEGORY	A	B	C	D
LPV DA	1199/18		200 (200-½)	
LNAV/VNAV DA	1528-1¾		529 (600-1¾)	
LNAV MDA	1620/24	621 (600-½)	1620-1¾	621 (600-1¾)

HIRL all Rwys
TDZL/RCLS Rwys 8L,
9R, 10, 26R, 27L and 28

SE-4, 14 MAY 2026 to 11 JUN 2026

SE-4, 14 MAY 2026 to 11 JUN 2026