

WAAS CH <b>48800</b> <b>W08D</b>	APP CRS <b>095°</b>	Rwy Ldg TDZE <b>1024</b> Apt Elev <b>1026</b>	<b>9999</b>
----------------------------------------	------------------------	-----------------------------------------------------	-------------

# RNAV (GPS) RWY 8R

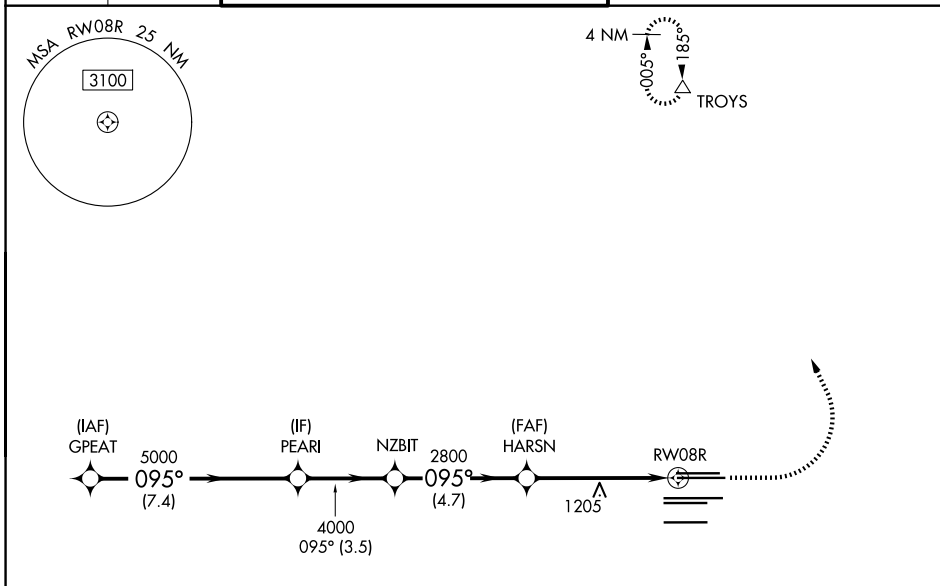
HARTSFIELD/JACKSON ATLANTA INTL (ATL)

RNP APCH - GPS.  
RADAR required.

▼ For uncompensated Baro-VNAV systems, LNAV/VNAV NA below -5°C or above 54°C. Simultaneous approach authorized with Rwy 9L or 9R or 10. LNAV procedure NA during simultaneous operations. Use of FD or AP providing RNAV track guidance required during simultaneous operations.

MISSED APPROACH:  
Climb to 1500 then climbing left turn to 3500 direct TROYS and hold.

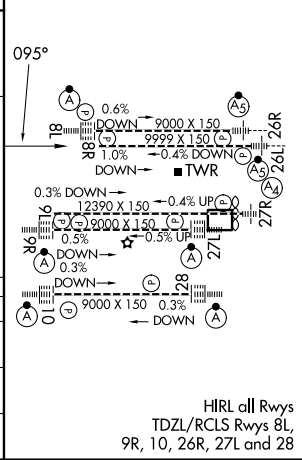
D-ATIS <b>119.65</b>	ATLANTA APP CON <b>127.9 379.9</b>	ATLANTA TOWER					ALL RWYS	GND CON	ALL RWYS
		8L-26R	8R-26L	9L-27R	9R-27L	10-28	(8L-26R, 8R-26L) (9L-27R, 9R-27L)	10-28	254.4
		<b>119.1</b>	<b>125.325</b>	<b>123.85</b>	<b>119.3</b>	<b>119.5</b>	<b>121.9</b>	<b>121.75</b>	<b>121.65</b>



ELEV 1026	<b>D</b> TDZE 1024
-----------	--------------------

VGSI and RNAV glidepath not coincident (VGSI Angle 3.00/TCH 67).

5000	5000	4000	2800	1500	3500	TROYS
GP 3.00° TCH 53						
	7.4 NM	3.5 NM	4.7 NM	4.3 NM	1.2	
CATEGORY	A	B	C	D		
LPV DA		1282/40	258 (300-¾)			
LNAV/VNAV DA		1440/60	416 (500-1¼)			
LNAV MDA	1460/55	436 (500-1)	1460-1¼	436 (500-1¼)		



SE-4, 14 MAY 2026 to 11 JUN 2026

SE-4, 14 MAY 2026 to 11 JUN 2026